

WHAT'S

Happening!

in Boone County, Kentucky

Winter/Spring 2010

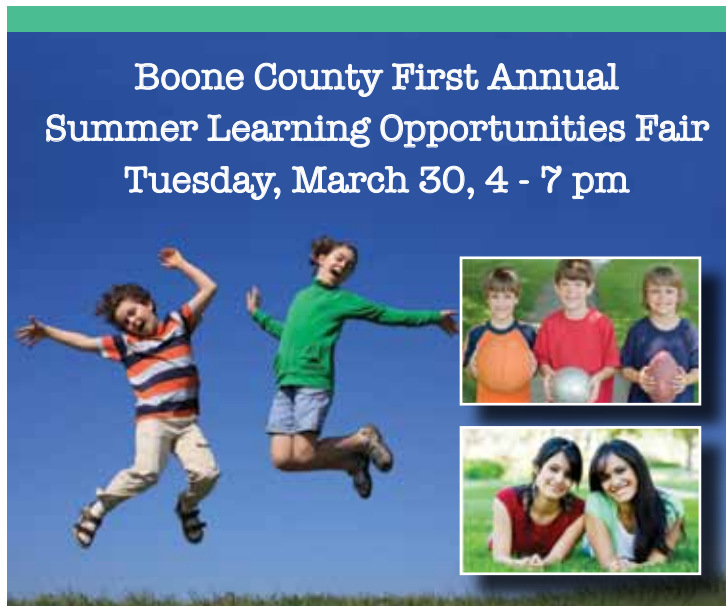
Leap Into Summer at the First Annual Summer Learning Opportunities Fair

How can parents keep children meaningfully engaged in a variety of learning and recreational activities during the summer months? Boone County Community Education is hosting an evening to answer this question. We have invited partners and organizations within the community to come to Ockerman Middle School on the evening of March 30, 2010 to provide parents with information about their summer programs.

The Summer Learning Opportunities Fair is a community wide event that provides a venue for parents and children to learn about summer programs.

Summer brings the sun, and along with it an illuminating array of camps, clinics, classes, and cultural events for all ages — everything under the sun for all interests. Stretch out and stretch your mind at school and in the community this summer.

Summer learning programs provide students with diverse opportunities to apply and explore skills they learn in school in ways that are relevant to their interests and their future.



The Summer Learning Opportunities Fair presents a wide range of opportunities:

- Summer activities for every budget
- Academic and cultural enrichment
- Skills enrichment program
- Sports camps and outdoor adventure
- Community service opportunities
- Programs for students with special needs

Choice is important as young people and their families decide how they will spend their time. Choosing what to do, where to do it and who to do it with increases the engagement of young people in their own learning in meaningful ways.

Engaging youth in summer learning opportunities increases academic outcomes and decreases learning loss. Summer programs can be fun and enriching, and promote learning outside of school. Youth participating in high quality summer learning opportunities

of any kind perform better when they return to school in the fall. Participating youth are less likely to experience summer learning loss than are non-participating youth.

“We are providing a venue for parents to select from an array of quality educational opportunities for students by bringing community resources together,” said Randy Poe, Boone County Schools Superintendent.

This informative community service event is free to the public and offers something for every student and every family budget. Many of the programs and opportunities highlighted at the Summer Learning Opportunities Fair are sponsored by Boone County Schools. Some camps and programs represented at the fair are offered by community partners and independent organizations that are not affiliated with Boone County Schools. No endorsement by Boone County Schools concerning exhibitor offerings is expressed or implied.

For More Information:

Contact: Laurie Walton
Schools Community Relations
859/282-4628
laurie.walton@boone.kyschools.us

We're Fighting the Swine Flu

Thousands of Northern Kentucky residents have been vaccinated against the swine flu (H1N1) by the Health Department through community clinics, school-based vaccination clinics and private medical providers.

The Health Department's vaccination campaign consisted of a three tiered approach. First, vaccine was shipped to local medical offices, initially focusing on pediatricians and obstetricians, as they serve children and pregnant women — two groups at highest risk for complications from the swine flu.

Second, the Health Department began community clinics on

November 11, with clinics at the Bank of Kentucky Center in Highland Heights, Walton-Verona Middle/High School in Walton, Summit View Middle School in Independence and Sherman Elementary School in Dry Ridge. A fifth community clinic is planned from 10 am to 4 pm on Saturday, January 9, at Cooper High School in Union.

Between Thanksgiving and Christmas, the Health Department cooperated with local schools to bring the vaccine to children. Nineteen clinics were held, with many clinics reaching children from multiple schools in a particular district.



Angelia Wallace of Cold Spring received her swine flu vaccination from Julia Gottschalk during the Health Department's clinic at The Bank of Kentucky Center on November 11.

For the latest on the swine flu vaccination effort, please visit the Health Department's website at

<http://www.nkyhealth.org> or call the flu information line at 859/392-0678.

Message from Dr. Katkowsky: Rolling Up the Sleeves ... In More Ways than One



Dr. Steven R. Katkowsky

The task of vaccinating those Northern Kentucky residents at highest risk from complications from swine flu is enormous, and beyond the scope of any that we've faced before. But, through the combined efforts of the Health Department staff, community volunteers, medical providers, partner agencies and the public, we've been able to get the vaccine out to those who need it.

This effort could not have been possible without the time, dedication

and willingness of people to deliver a necessary community service. The Health Department staff has been tremendous in their efforts, working weekends and holidays to meet the needs of our community. They deserve a great amount of credit and certainly our appreciation.

We cannot do it alone, though. Our community partners—the Emergency Management Agencies, first responders, school systems, Northern Kentucky University, TANK and local businesses have been supportive and given their resources to ensure success for the community. In addition, we've been fortunate for the services of our Medical Reserve Corps, who volunteered their time and expertise to help staff the flu clinics.

I am honored to be a part of this effort.

Smoking Cessation Classes Scheduled

Quit smoking in 2010 with the help of the Cooper-Clayton Smoking Cessation program. Three sessions will begin in January:

- 1:30 to 2:30 pm on Thursdays, starting January 7, at the Grant County Board of Education, 820 Arnie Risen Blvd, Williamstown, Ky.
- 6 to 7 pm on Tuesdays, starting January 12, at the Campbell County YMCA, 1437 S. Fort Thomas Ave., Fort Thomas, Ky.
- 6 to 7 pm on Mondays, starting January 25, at the Health Department's District Office, 610 Medical Village Drive, Edgewood, Ky.

For details or to register, <http://www.nkyhealth.org> or call Megan Folkert at 859/363-2093.

Northern Kentucky Health Department

Earl Parker Robinson Boone County Health Center

7505 Burlington Pike
Florence, KY 41042
phone: 859/363-2060
fax: 859/647-3594

District Administrative Office

610 Medical Village Dr.
Edgewood, KY 41017
phone: 859/341-4264
fax: 859/578-3689



NORTHERN KENTUCKY
INDEPENDENT DISTRICT
HEALTH DEPARTMENT

UPCOMING EVENTS & SERVICES

For more information about any of these programs, call the number listed or visit the City's Activity Guide at www.florence-ky.gov.



SNOW EMERGENCY INFORMATION

Winter

The City of Florence asks its residents for assistance during the Public Services Department's snow removal operation by moving parked vehicles off of the streets when snow is expected. Florence has one level of snow emergency status, and the primary radio and television stations are notified when the City has declared a snow emergency. In such instances, all on-street parking is prohibited for a period of 24 hours. Visit Florence website or call 647-5420.



DR. MARTIN LUTHER KING JR. PROGRAM

Monday, January 18

The City of Florence will hold its annual Martin Luther King, Jr. Day Program on Monday, January 18 at 3 pm at the Florence Government Center (8100 Ewing Boulevard). Visit Florence website or call 647-5439.



PRESIDENTS DAY DISPLAY

Monday, February 15

The City of Florence celebrates Presidents Day on Monday, February 15. Stop by the Florence Government Center (8100 Ewing Boulevard) to view the display of United States Presidents, Vice Presidents, and First Ladies and answer trivia questions throughout the business day from 9 am to 4 pm. Visit Florence website or call 647-5439.



STUDENT AMBASSADOR PROGRAM

Monday, March 1

Applications for the City's Student Ambassador Program are due on Monday, March 1. Applications are available at Florence middle and high schools and also at www.florence-ky.gov for students in grades 6-12. Florence residents will be selected to represent the City and the youth in the community at City-sponsored events and various Northern Kentucky community events. Visit Florence website or call 647-5439.



CITIZENS POLICE ACADEMY

Wednesday, March 3

The City of Florence Police Department holds its annual Citizens Police Academy beginning on Wednesday, March 3 for participants to learn first hand from police officers and guest speakers about traffic violations, building searches, interviewing suspects, and many other topics. The eight-week course meets each Wednesday at the Florence Government Center, 8100 Ewing Boulevard. Visit Florence website or call 647-5420.

UPCOMING EVENTS WINTER 2010

For more information about any of these programs, visit the City's Activity Guide at www.florence-ky.gov.



YOUTH IN GOVERNMENT PROGRAM

Tuesday, March 9

The City of Florence will host its annual Youth in Government Program on Tuesday, March 9 from 6-7 pm in the Community Rooms of the Florence Government Center (8100 Ewing Boulevard). The program is open to all ages and will provide those who attend an opportunity to learn about the role local government plays within their community. City departments will provide presentations of its role in the local government process and students learn the legislative duties of the Mayor and City Council. The event will continue during the weekly Florence City Council meeting at 7 pm in the Council Chambers. Mayor Diane E. Whalen will recognize those in attendance. Visit Florence website or call 647-8177.



SAFE SITTER BABYSITTING CLASSES

March 13 & May 15

The City of Florence holds 6-hour Safe Sitter babysitting classes throughout the year at the Evelyn Kalb Gathering House at the Florence Nature Park (Banklick Street). Upcoming classes: Saturday, March 13 and Saturday, May 15. Fee: \$40. Visit Florence website or call 647-5439 for times.



EASTER EGG HUNT

Saturday, April 3

Florence holds its annual Easter Egg Hunt at Champion Window Field (off of Freedom Way), home of the Florence Freedom, on Saturday, April 3. Sponsored by the Florence Police Department in conjunction with the Florence Freedom, costumed characters will be on hand for photographs at 11 am followed by the egg hunt at noon (conducted by age groups). The free program is designed for children up to age 10. Visit Florence website or call 647-5420.



TENNIS CLINICS

April 12-May 30

The City of Florence offers Tennis Clinics at Lincoln Woods courts. Registration forms are sent through schools and are available in the lobby of the Florence Government Center (8100 Ewing Boulevard) or on the City's webpage at www.florence-ky.gov. Register for clinics directly through instructor Tim Mitchell at 513/328-8811 or at 513/541-9811 (class days, times, fees, etc.). Visit Florence website or call 647-5439.



GREAT AMERICAN CLEANUP

Saturday, April 24

The City of Florence's Great American Cleanup program on Saturday, April 24 provides an opportunity for people to volunteer and clean litter along designated roadsides within the City limits. Join the City during this national service project and receive a light breakfast, lunch, and t-shirt. Visit Florence website or call 647-5416.



SPRING CLEANUP

April 26-May 2

City of Florence residents (must show proof of residency) may bring their trash and debris (excluding hazardous waste) April 26-May 2 to the Public Services Maintenance Facility located at 7851 Tanners Lane (across from the Florence Government Center), for disposal. No fee or registration required. Visit Florence website or call 647-5416.

UPCOMING EVENTS WINTER 2010

For more information about any of these programs, visit the City's Activity Guide at www.florence-ky.gov.



ARBOR DAY PROGRAM

Saturday, May 8

The City of Florence's annual Arbor Day program will be held on Saturday, May 8 at the Florence Nature Park (Banklick Street). The program is from 10 am to noon and includes a brief history of Arbor Day, reading of the City's Arbor Day proclamation, various tree planting activities, and lunch. Visit Florence website or call 647-5416.



PUBLIC SERVICES NIGHT OUT

Tuesday, May 18

The City of Florence Public Services Department will hold its 4th annual Public Services Night Out on Tuesday, May 18 from 4 - 6:30 pm on Mall Road (between Qdoba Mexican Grill and Stafford Jewelers). This event is hosted in conjunction with National Public Works Week and is an opportunity to raise awareness and recognize the impact Public Works staff has on improving the quality of life within the community. Bring family and friends to enjoy free ballpark style food, live demonstrations, and see the equipment used every day by the Public Services Department. Visit Florence website or call 647-5416.



FLORENCE FREEDOM BASEBALL

May 14-September 2

The Florence Freedom baseball team will begin its eighth season in the Frontier League on Friday, May 14 at 7:05 pm at Champion Window Field (off of Freedom Way) against the Oakland County Cruisers. Visit Florence website or call 594-4487.



FAMILY AQUATIC CENTER

May 29-August 22

The Florence Family Aquatic Center, located on the campus of the Florence Government Center (8200 Ewing Boulevard), opens its gates on Saturday, May 29. The facility is open from 11 am-7 pm, Sunday-Saturday (closed on Monday, July 26 for the Northern Kentucky Swim League All-Star Meet). Admission is available through the purchase of a season membership or by paying a daily rate. Purchase memberships at a 10% discount until Friday, April 30. Gift cards are available in \$25 increments for admission, programs, or rentals. For rates, rules, times, and more, call 647-4619 or go to the City's Activity Guide at www.florence-ky.gov.

REMEMBER!

You receive a 10% discount if you purchase your membership to the Aquatic Center by Friday, April 30.



MEMORIAL DAY PARADE & PROGRAM

Monday, May 31

The City will hold its annual Memorial Day Parade & Program on Monday, May 31. The parade begins at 10 am at Boone County High School and ends at the Boone County Veterans Memorial, located on the campus of the Florence Government Center (8100 Ewing Boulevard). Parade registration forms are available at the Government Center or download it from the City's webpage at www.florence-ky.gov. The memorial service begins at 11 am at the Boone County Veterans Memorial. Visit Florence website or call 647-5439.

ONGOING PROGRAMS AND CLASSES

Take advantage of these ongoing programs in Florence!

For more information about any of these programs, visit the City's Activity Guide at www.florence-ky.gov.

AMERICANS SUPPORTING AMERICANS

The City of Florence has adopted a military unit stationed in Iraq through the program Americans Supporting Americans. In lieu of merchandise, cash donations are used for the purchase of specifically requested items. The Wal-Mart on Houston Road pays for shipping costs. Visit website or call 647-8177.

CHILD CAR SEAT SAFETY CHECK

The Florence Fire/EMS Department offers Child Car Seat Safety Checks. Visit website or call 647-5660.

FIRST AID CLASSES

The Florence Fire/EMS Department conducts first aid classes. Visit website or call 647-5660.

BASIC FIRST AID TRAINING FOR LITTLE PEOPLE — RED CROSS CLASS

The Florence Fire/EMS Department conducts the Basic First Aid Training for Little People—Red Cross Class. Visit website or call 647-5660.

ON OUR OWN—RED CROSS CLASS

The Florence Fire/EMS Department conducts the On Our Own—Red Cross Class. Visit website or call 647-5660.

TAEKWONDO

The City of Florence offers Taekwondo classes. Visit website or call Instructor Marsha Gerkin at 781-0995.

RECYCLING PROGRAMS

The City of Florence offers a voluntary subscription recycling program for Florence residents through Rumpke. Call 1-877-786-7537, 647-5416, or go to www.florence-ky.gov.

City of Florence



Administration.....859/647-8177
 City Clerk.....859/647-8178
 Finance/Tax.....859/647-5413
 Fire/EMS.....859/647-5660

Parks and Recreation.....859/647-5439
 Police(non emergency).....859/647-5420
 Public Services.....859/647-5416

www.florence-ky.gov

Boone County Planning Commission

Transportation for the Future

Boone County's transportation network continues to improve despite the slow economy. After many years of record employment and population growth, several State roads have finally been improved and more are scheduled. In the last two years, North Bend Road (KY 237), Industrial Road (KY 1829) and Turfway Road (KY 1017) have been reconstructed to accommodate existing and future vehicle and pedestrian travel. These projects have improved traffic patterns and addressed congestion problems in order to help business travel in two major industrial centers and a regional retail area.



In a couple of months, Phase I of the Mall Road Reconstruction project will begin. Again, this project will help with business reinvestment in Northern Kentucky's #1 shopping area. The improvements will not only include a new paved surface and intersection improvements, but also sidewalks, signage, storm water features and landscaping. Imagine Mall Road with a landscaped

boulevard! Phase I will be completed by October, 2010 and Phase II, or the area south of the Florence Mall to U.S. 42 will begin in Spring, 2011. A second project beginning in a few months is the widening of Pleasant Valley Road (KY 237) from U.S. 42 to Rose Petal / Lilac Drive. The Pleasant Valley Road/Camp Ernst Road project is divided into three phases with future phases scheduled

beyond 2010. The expanded road will eventually be five lanes with a multi-use path for cyclists and pedestrians built on both sides of the road.

The first phase of the South Airfield Road is scheduled for construction in 2010. This project will help move traffic in and around Florence. Finally, the upgrade of Mt. Zion Road (KY 536) from I-75 to Old Union Road is scheduled for 2012, but funding remains uncertain at this time. This project will have an immediate impact on the development of the Union Town Center. Stay tuned for future updates or visit the Planning Commission's web page at www.boonecountky.org/pc.

SD1 Offers Grant Program

As part of its federal court order with the U.S. EPA and the Commonwealth of Kentucky, SD1 has developed a program to reimburse qualified homeowners for a portion of the cost of certain sanitary sewer improvement projects. Qualifying projects include the repair or replacement of failing sanitary service laterals and the installation of new sanitary service connections to SD1 sewer mains. Routine operation and maintenance projects such as root-cutting or cleaning are not included in this program.

Eligibility is determined by household income which is defined as the gross income of all household

members, except income earned by dependent minors younger than 18 years of age. Households with incomes at or below the low income level as established by the U.S. Department of Housing and Urban Development (HUD) are eligible to apply for funding through this program. Proof of income documentation must be included with the project application. Approved homeowners may be eligible to receive grants from \$3,000 to \$5,000 towards such projects, depending on their income level.

For more information regarding this program or to download an application, please visit us on the web at www.sd1.org.



Private sewer lateral repairs can be costly. Contact SD1 to find out if you qualify for assistance.

Consider Basement Back-Up Insurance



Basement back-ups can cause property damage as well as health risks.

Sewer service laterals are sewer pipes that connect a building's plumbing to the public sewer system. Homeowners are responsible for maintaining the sewer service lateral(s) on their property. Broken laterals can allow tree roots or debris into the pipe, which may cause blockages, building backups or overflows in the environment.

When a backup occurs, clean-up costs can range anywhere from \$100

to \$20,000. Back-up insurance is available, but is not typically included in a standard homeowner's policy. The average homeowner can get \$10,000 worth of sewer backup insurance for as low as \$50 per year. This amount will typically cover a backup whether it is caused by a private lateral or a main sewer line. Check with your insurance provider and consider adding basement back-up insurance to your policy today!

Pick Up Your SD1 "Live a Little Greener" Calendar

Are you interested in learning about the little things you can do to protect the environment? As part of our educational initiatives, SD1 is offering a 12-month desk calendar. Each month provides information on a different environmental topic as well as a tip for something you can do at home to help make Northern Kentucky a little greener.

January's tip reminds us that excess salts used for deicing can build up in the soil, preventing plants from absorbing moisture and nutrients.

They can also leach heavy metals, which eventually make their way into water supplies.

When treating your pavement after the next snow or ice storm, physically remove as much of the snow and ice as possible. If you have to apply salt, look for environmentally friendly brands and remember that a little goes a long way!

For more information and tips, pick up a calendar at SD1's main office while supplies last.

SD1



1045 Eaton Drive • Fort Wright, KY 41017
phone: 859/578-7450

Hours of Operation:
Monday-Friday, 8 am - 4:30 pm

Hopes and Dreams

People want to be able to take care of themselves and their families. They want a safe and decent place to live, a better life for their children ... to belong and to be happy. Understanding this and what it takes to get there, often in the face of many obstacles, is what drives the mission of Brighton Center. Our mission is to create opportunities for individuals and families to reach self-sufficiency through support services, education and leadership. To the Center, self-sufficiency means being able to take responsibility for yourself and your family using available resources to maintain the best quality of life possible.

Since 1966, Brighton Center has been working to be an innovative leader that strengthens the vitality of the community and engages people as they work and live to achieve their hopes and dreams. From modest beginnings in a Newport storefront when we were founded, Brighton Center has grown to provide a uniquely comprehensive range of programs and services including family and work supports; financial and homeownership services; workforce development services including education, employment and training



Our mission is to create opportunities for individuals and families to reach self-sufficiency through support services, education and leadership.

Since 1966, Brighton Center has been working to be an innovative leader that strengthens the vitality of the community and engages people as they work and live to achieve their hopes and dreams.

programs; substance abuse recovery services for women; early childhood education; and neighborhood based programs including community organizing and housing development. We are proud to be an integral part of the community and our newest program, the Brighton Recovery Center for Women is located on Weaver Road in Florence.

Many hard-working Boone County families are facing difficult

and unstable times. Your generous donations allowed Brighton Center to respond to 72,876 individuals with comprehensive programs and wrap-around services offered nowhere else in our region. Many of our friends and neighbors who have never asked for help before are now turning to us. For some, Brighton Center is the last and only hope. For over 43 years, hope has had a name for the families who need it the most, the name

is Brighton Center. Today you have the power to change lives and provide the hope that someone so desperately needs through a financial donation or volunteering your time.

Brighton Center wishes you and your family a warm holiday season and a prosperous new year!

For more information, or to make an online donation, please visit:
www.brightoncenter.com

Wish List

- Cereal, Pancake Mix, and Syrup
- Spaghetti and Pasta Sauce
- Soups and Crackers
- Shampoo, Soap, Deodorant
- Razors and Shaving Cream
- Baby Diapers (sizes 3,4,5)
- Baby Wipes
- Hand Soap, Sanitizer & Lysol Spray or wipes
- Canned Meats (Tuna, Chicken, etc.)
- Peanut Butter
- Toothpaste & Toothbrushes
- Laundry Detergent
- Toilet paper & cleaning supplies

*Wish List items can be dropped off at the following address:
Brighton Recovery Center, 375 Weaver Road, Florence, KY 41042*

Brighton Center



**PO Box 325
Newport, KY 41072
phone: 859/491-8303
fax: 859/491-8702**

Snow Removal in Boone County

Wintery weather can cause challenging driving conditions throughout our county. This can result in employees unable to attend work, an interruption in childcare routines, lost revenue to the school districts and general inconvenience to the travelling public. The Boone County Fiscal Court understands the importance of prompt and effective road treatment throughout the county and has made this service a high priority within county government. This article will provide information on the size of our responsibility, scope of our operations and equip you with some important tips that can assist with effective treatment of county roads during weather events.

Each year as new streets are built, the county's snow routes are reviewed and adjustments are made to ensure the treatment of roads in a timely manner. Streets are ranked on a priority list from one (most urgent) to three (less urgent). There are 34 trucks that collectively treat over 400 miles of roads, approximately the distance between Burlington and Atlanta. The Public Works Department must travel several thousand miles for a typical snow/ice event. This results in an average of about four to six hours to fully treat each route. Plowing can take considerably longer than simple pavement treatment because of the precision and caution that must be taken to safely move the snow. Salt is the primary material used to treat the roads. The county services all of the county roads while the cities are

responsible for roads within their jurisdiction and the state services all state highways within the county.

This past winter there were nine separate weather events in the county that resulted in snow removal and/or road treatment operations. A typical event resulted in an average cost to the county of approximately \$60,000 including overtime, fuel, salt and related expenses. Over 4,000 tons of salt were used last year to treat county roads, at a total cost for material

alone of almost \$250,000. Currently the Public Works Department has prepared for this season by purchasing 5,000 tons of salt stored in three separate locations. Furthermore, we have reserved 5,000 additional tons if needed. A newly constructed salt dome at the Public Works facility has greatly enhanced the county's ability to store significant amounts of salt and generally be better prepared for extended wintery weather.



A newly constructed salt dome at the Public Works facility has greatly enhanced the County's ability to store significant amounts of salt and generally be better prepared for extended wintery weather.

Boone County Judge/Executive Gary Moore in front of salt dome

The county annually evaluates our snow and ice operational plan, constantly looking for ways to improve our performance and upgrade the level of this important service. During the past year, several meetings were held with representatives from the Boone County Public Works Department, the Sheriff's Department, the Kentucky Transportation Cabinet and both Walton-Verona and Boone County Public School Districts to discuss better ways to coordinate efforts and enhance overall service. As a result of these conversations, adjustments in our operational plan were made that are designed to improve service and communications between each agency for the upcoming season.

Snow Emergency Levels

A Snow Emergency may be declared by the Boone County Judge/Executive directly or through the Boone County Emergency Management Office after consultation between the Boone County Emergency Management Office, the Boone County Public Works Department and the Boone County Sheriff's Department.

Snow Emergencies shall be defined at one of the following levels:

Level One: Motorists are advised to use caution due to hazardous road conditions resulting from accumulations of snow and/or ice.

Level Two: Road conditions are extremely hazardous due to snow and/or ice and essential travel only is advised.

Level Three: Road conditions are extremely dangerous and travel is restricted to the following purposes: public safety and emergency personnel travel; travel to and from

Continued on page 10

TIPS FOR RESIDENTS

- Avoid all nonessential travel during hazardous weather conditions
- Listen for news announcements and comply with all weather alerts
- Allow for additional travel time during a weather event if you must be out travelling
- If you are involved in a traffic accident during inclement weather, immediately call 911 and await further instructions from the Boone County Public Safety Communications Center

Boone County Parks Named Kentucky's 2009 Outstanding Department

Boone County is a growing community with a population of over 115,000. As the county continues to grow, so does the demand for programming and events to fit the needs of our residents. The Boone County Parks and Recreation Department works diligently to offer everyone recreational and leisure opportunities. In 2009, 31,089 participants registered or participated in Park programs. Over 12,000 youth participated in sports programs and over 11,000 people attended the Union Pool.

In November of 2009, the Kentucky Recreation and Park Society held its annual conference in Louisville, KY. Parks and Recreation professionals throughout the State united, attending workshops and educational sessions on various topics regarding the Parks and Recreation field.

As a result of the Parks Department's continued efforts, at this year's conference, Boone County Parks Department was awarded Outstanding Department for 2009. The award is presented to

a department that has demonstrated outstanding contributions in leisure services, along with all facets of parks and recreation programs.

Judge/Executive Gary Moore said, "This award recognizes Boone County's commitment to providing healthy recreational programs for our residents. From young families to seniors, everyone can benefit from these outstanding programs and facilities."

The Boone County Parks Department currently consists of 17 facilities with over 1,901 acres of

dedicated parks and recreation space. These facilities are maintained by the Parks Maintenance staff.

The Boone County Parks Department is honored to be Kentucky's 2009 Outstanding Department. Boone County Parks offers programming and events throughout the year.

If you would like to obtain more information, visit our website at www.boonecountyky.org/parks or call 859/334-2117.

SNOW REMOVAL IN BOONE COUNTY, continued from page 9

work if required by your employer; travel for medical purposes or to obtain necessary provisions. Travel for any other purposes is considered to be nonessential and violations will be enforced by law enforcement personnel.

Read Boone County's Snow Emergency Policy in its entirety here: <http://www.boonecountyky.org/bcsnowemerg.pdf>



Boone County is responsible for plowing all roads within unincorporated areas of the County that are not state or city roads.

off of the street and out of cul-de-sac areas during snow removal operations to facilitate treatment.

Who Plows What

It's important to understand which entity is responsible for salting and plowing each road. The State of Kentucky Department of Transportation covers all Interstates and state roads. Generally speaking, state highway is any road that has a number assigned to it (i.e. North Bend Road - S.R. 237, Burlington Pike - S.R. 18, U.S. 42, U.S 25, etc.). The cities of Florence, Walton and Union are responsible for all roads within their jurisdictions except, of course, for state roads. Boone County is responsible for all other

roads within unincorporated county that are not state or city roads. Residents can view the Boone County Street Index online. The website address is www.boonecountygis.com/StreetIndex.aspx. If the road is county maintained, the quickest way to notify the Public Works Department during a weather event is via the e-Gov website available here: <http://www.egovlink.com/boonecountyky/action.asp>. From the County's homepage (<http://www.boonecountyky.org>), hover your mouse over the "Quick Links" icon and the e-Gov service is labeled "Community Feedback." Using this system will generate a Condition Alert that will notify us about the specific snow or ice problem.

Important Phone Numbers

Contacting the Entity in Charge of Your Street:

Entity Responsible	Please Call
Kentucky DOT	371-3045
Boone County	334-3600
The City of Florence	647-5416
The City of Union	384-1511
The City of Walton	485-4383



Program Schedule

Expand Your Horizons!

You may register on-line, in person or mail in, beginning Tuesday, January 12, noon-6 PM.

■ **On-line registration:**
www.boone.kyschools.us,
Select District Office,
Choose Community
Education

■ **In-Person Registration**
will be held noon-6 PM,
Tuesday, January 12
Ralph Rush Staff
Development Center
99 Center Street
Florence, Kentucky
41042

■ **Mail-in Registration:**
Boone County Schools
8330 US 42,
Florence, KY 41042,
Attn: Community
Education Department

Community Partners:

Boone County Board of
Education

Boone County Adult
Education

Boone County Cooperative
Extension Service

Boone County Parks
Department

Boone County Public Library

Walton-Verona Board of
Education

EXPAND YOUR CREATIVITY

NEW! BASKET — FISH MOUTH

This oval base, woven basket is shaped so that the top portion of the basket resembles an open mouth of a fish. Handle is woven. Finished size is approximately 8" in height without the handle, 12" in height with the handle. Weave your own unique family heirloom! All supplies will be included.

\$32
Tuesdays, March 9-23, 6-9 PM
Old Parks Office, *OR*
Mondays, March 8-22, 6-9 PM
Petersburg Community Center
Jo Ann Wess

CHOCOLATE HEART BOX WITH CANDIES

You will make a small box out of chocolate, then make some small candies to put inside. Candy mold included. Great for Valentine's Day.

\$18
Thursday, February 11, 7-9 PM
Conner High School
Mary Jean Gunter

NEW! COOKIE DECORATING

Decorate a variety of designs. Use cookie icing, butter cream or fondant. Make butterflies, monkey, lion, lady bug, flowers, sports, and seasonal ideas. Bring a container to carry your cookies home.

\$31
Thursday, March 25, 7-9 PM
Conner High School
Mary Jean Gunter

NEW! COOKING ITALIAN SAUCES IN YOUR OWN KITCHEN

Learn how to prepare various Italian sauces — reds, whites and pesto. You will prepare and sample those wonderful sauces that you learn to create. All supplies included in class fee. Bring small containers to class to take home your samples.

\$45
Wednesday, March 3, 6:30-8:30 PM
Conner High School
Carole Pagano

CROCHET

In this 4-week class, the basic techniques of crocheting will be taught and/or reviewed. Beginners, and those with some experience, are welcome. Beginners should bring a skein of worsted weight yarn and a size 'H' crochet hook to the first class. Others may bring a project of their choice. Class size limited to 15.

\$30
Mondays, 7-9 PM
January 25 - February 22
(No class February 15)
Conner High School
Ann Thompson

CRYSTAL WEAVE BRACELET

Use Swarovski crystals and glass beads to create a beautiful woven bracelet unlike anything you have ever seen! Dozens of color combinations to choose from to fit your style. All materials included.

\$35
Tuesday, April 6, 6-8 PM
Ockerman Elementary
Jessica Waincott

CUPCAKES FOR ALL OCCASIONS

Each student will decorate 8 cupcakes and learn to make decorations using fondant and buttercream icing. Supplies will be furnished by instructor.

\$33
Thursday, April 22, 7-9 PM
Conner High School
Susan Zugehoer

CUPCAKES GALORE

Decorate 8 cupcakes in your choice of design, ranging from flowers, butterflies and seasonal. Try something new! Bring container to take your cupcakes home.

\$36
Thursday, February 25, 7-9 PM
Conner High School
Mary Jean Gunter

NEW! DECORATING BROWNIES

Students will learn how to cut brownies and decorate them for all occasions. Each student will take home many samples. All supplies included.

\$33
Thursday, April 29, 7-9 PM
Conner High School
Susan Zugehoer

NEW! HERRINGBONE WEAVE BRACELET

Create your own easy, fun and unique woven bracelet unlike anything you have ever seen! There will be dozens of color combinations to choose from to fit your style. All materials are included.

\$35
Thursday, March 18, 6:30-8:30 PM
Gray Middle School
Jessica Waincott

NEW! PANORAMIC EGG

Look inside this sugar egg for an Easter scene. Nice for a center piece or special decoration for a basket.

\$23
Thursday, March 11, 7-9 PM
Conner High School
Mary Jean Gunter

NEW! RAG RUG WEAVING

If you are looking for a way to use those scraps of fabric you have been saving, this is the class for you. You will learn the old art of rag rug weaving. You will need to bring to class: three pre-washed one-and-a-half yard pieces of different color or pattern cotton fabric (no stretchy fabric). Needle/shuttle and book are included in tuition. You will weave an oval rug. Class is limited to 8.

\$45
Mondays, March 8 & 15, 6-8 PM
Conner High School
Louise Grivetti

SEAT CANING

In this 8-session course, you will learn how to use natural cane to re-weave seats of antique chairs, stools, etc. Please bring chair to first class. Materials may be purchased through the instructor. Class size limited to 14.

\$45 PLUS materials
Tuesdays/Thursdays, 6:30-9 PM
January 19-February 11
Conner High School
Sharon Mason

ADVANCE YOUR SKILLS

BASIC MICROSOFT EXCEL (2007) SKILLS

In this 2-evening session, we will explore basic spreadsheet applications. Through hands-on practice, we will learn to use the menu bar and basic tools to create simple spreadsheets for budgets, inventories, simple listings of names, recipes, and other basic spreadsheet skills (simple formulas, listing, charting, copy, paste, etc.) necessary in everyday computer usage. This will prepare you for the MS Excel class.

\$40
March 8 & 11, 4:15-6:15 PM
Conner High School
Kim Trauger

BASIC MICROSOFT WORD (2007) SKILLS

In this 2-evening session, we will explore basic word processing skills. Through hands-on practice (using Microsoft Word 2007), we will learn to use the menu bar and basic tools to create simple letters and flyers, and cover very basic word processing skills, copy & paste, and inserting pictures.

\$40
January 28 & February 1
4:15-6:15 PM
Conner High School
Kim Trauger

NEW! BEGINNER'S INTRODUCTION TO EBAY

In this 2-evening session, we will explore the world of EBAY, including registering, buying and selling. See how to bid, purchase, etc. See how to become a seller, create your listings, set up your shipping, etc. Please bring information on a couple of items you might be interested in purchasing, as well as a couple of items you want to sell (a picture on a CD or flash drive would be great, if you have one.)

\$40
February 11 & 16, 4:15-6:15 PM
Conner High School
Kim Trauger

Advance Your Skills, cont.

NEW! EBAY CLASS — PART 2

Prerequisite is the completion of Beginners Introduction to eBay class. This class will continue on with the concepts presented in the introduction class and will follow up with listings that the students have created and how to manage those listings and the accounts. We will also look at more options when listing, problems encountered when listing, etc.

\$40
February 22 & March 1
4:15-6:15 PM
Conner High School
Kim Trauger

MICROSOFT ACCESS (2007)
Students will learn the basics of Microsoft Access in this two-evening class. Create a database using tables, queries, forms and reports to store and utilize your information.

\$65
March 8 & 9, 5:30-8:30 PM
Ryle High School
Ruth Davis

MICROSOFT EXCEL I (2007)
Students will learn the basics of Microsoft Excel 2007 in this two-evening class. Topics will include creating and saving spreadsheets, formatting and editing, calculating formulas and inserting charts.

\$65
February 22 & 23, 5:30-8:30 PM
Ryle High School
Ruth Davis

MICROSOFT EXCEL II (2007)
A continuation of Introduction to Microsoft Excel I (2007). Advanced concepts will be taught including changing worksheet appearance, advanced formulas, auto-fractions and worksheet organization.

\$65
March 1 & 2, 5:30-8:30 PM
Ryle High School
Ruth Davis

MICROSOFT WORD I (2007)
Learn the basics of Microsoft Word in this two-evening class. Topics will include creating and saving documents, editing text and graphics and creating and editing tables.

\$65
January 25 & 26, 5:30-8:30 PM
Ryle High School
Ruth Davis

MICROSOFT WORD II (2007)
A continuation of Microsoft Word I (2007). Advanced concepts will be taught including formatting tables, letters, envelopes & labels, headers & footers, mail merge, and e-mail attachments.

\$65
February 1 & 2, 5:30-8:30 PM
Ryle High School
Ruth Davis

POWERPOINT (2007)

PowerPoint 2007, a complete presentation graphics program. Students will learn to customize presentations using design templates, clip art, animation schemes and custom backgrounds.

\$65
February 8 & 9, 5:30-8:30 PM
Ryle High School
Ruth Davis

SKILLS FOR WINDOWS AND EXPLORING THE INTERNET

This 2-evening session is for students who need to learn or review fundamental computer skills and terminology prior to taking other computer-related classes. Through hands-on experience, we will cover basic Windows settings (screen savers, colors, display, etc.), saving and organizing your files into folders.

\$40
January 19 & 21, 4:15-6:15 PM
Conner High School
Kim Trauger

EXPLORE YOUR INTERESTS

BALLROOM DANCING

A beginners course, learn the Fox Trot, Waltz, Slow Partner Dance and Tango. Starting with the basic steps and into leading and following with a partner. Smooth- soled shoes required.

\$45
Mondays, 7:30-8:30 PM
January 25 - March 1
(No class on February 15)
Conner High School
Carolyn Rollin

COMMUNITY EMERGENCY RESPONSE TEAM (C.E.R.T.)

Intense hands-on training designed to help citizens protect themselves, their family and their neighborhood in disaster situations. Learn preparedness for hazards that may impact our area and basic disaster response skills including utility management, small fire suppression, medical assistance, searching for victims safely, and how to organize a team to be effective. Those who complete the training are assigned to a team which may be activated to assist with disaster response. (Open only to Boone County residents over 18 years of age.) Class limited to 25.

\$25
Call 334-2279 for times & dates
Boone Co. Public Safety Campus
Mark Ihrig, Bill Fletcher and Steve Hearne

DANCE TO EXERCISE

No partners needed but a great way to exercise, socialize and learn to dance! We'll be dancing cha cha, rumba, samba, salsa and more in this non-stop hour of FUN!

\$45
Mondays, 6:30-7:30 PM
January 25 - March 1
(No class on February 15)
Conner High School
Carolyn Rollin

DANCE WORKOUT

Become skilled at dancing while getting a workout. Learn dance movement and techniques to various styles of music like Latin, hip-hop and swing with constant core movements. No partner required.

\$45
Tuesdays, 7-8 PM
February 9 - March 9
Florence Elementary
Sophy Kdep

DIGITAL PHOTOGRAPHY I

This class is a basic course for beginners or amateurs with limited experience in photography. You will learn the rules of composition and exposure, using a digital camera for "candid picture taking." Students must own a point-and-shoot digital camera.

\$50
Tuesdays & Thursdays, 6-8 PM
January 19 - 28
Florence Elementary
Domenico Vassallo

DIGITAL PHOTOGRAPHY II

This class is an intermediate course for amateurs with 2 or more years of experience in digital photography. You will learn all the technical aspects of beautiful picture "making." Student must own a digital camera (advanced point-and-shoot or SLR) and have access to a computer. CD with tutorial is included.

\$55
Thursdays, 6-8 PM
February 4 - March 11
Florence Elementary
Domenico Vassallo

DIGITAL PHOTOGRAPHY EDITING

This class is for beginner and advanced students who want to fix and enhance their pictures using Photoshop Elements. Some experience with PC required. CD with tutorial included.

\$60
Mondays, 6-8 PM
February 1 - March 8
(No class February 15)
Conner Middle School
Domenico Vassallo

FLY FISHING BASICS

Beginner's guide to fly-fishing – What you really need, what is nice to have and what you can skip for a long time. Covers gear, tackle, knot tying and fly casting.

\$10
Saturday, April 17, 10 AM-4 PM
Boone Co. Public Library, Burlington
Northern Kentucky Fly Fishers

NEW! INSTANT GUITAR FOR HOPELESSLY BUSY PEOPLE

In just a few hours you can learn enough about playing the guitar to give you years of musical enjoyment. This crash course will teach you some basic chords and get you playing along with your favorite songs right away. Guitar Workbook and practice CD included in fee.

\$55
Tuesday, February 16, 6:30-9 PM
Gray Middle School
Mark Jacus

ONE STROKE PAINTING — DONNA DEWBERRY STYLE

Learn the basics of painting various leaf and petal strokes from a certified instructor who guides you through step-by-step. Perfect for beginners. Materials, project and brushes included in fee.

\$75
Tuesdays, 6-8 PM
February 23 - March 16
Conner High School
Louise Grivetti

ONE STROKE PAINTING — INTERMEDIATE CLASS

In this 3-week class, you will review strokes and continue on with painting new flowers and leaves. You will do a new project every class. Please bring your brushes, paint, water container, double loader and plastic table cover. Be prepared to paint the night away! Must have had previous One Stroke instruction/experience.

Limit 8.
\$55
Tuesdays, 6-8 PM
March 23 - April 6
Conner High School
Louise Grivetti

NEW! SO YOU'VE ALWAYS WANTED TO WRITE A NOVEL

If you've ever wondered what it's really like to create your own world and get to rule it (at least on paper) this is your chance to find out from an award-winning author of 25 published novels. From "Where do the ideas come from?" to "How do you research?" — get your questions answered. Minimum of 6 students required to hold session.

\$20
Tuesday, February 16, 6:30-8:30 PM
Camp Ernst Middle School
Patricia McLinn

SPANISH FOR THE EVERYDAY WORLD-LEVEL I

This four-week course is designed to provide an introduction to the Spanish language, with emphasis on basic, "real world" communication and everyday phrases.

\$40
Mondays, 6:30-8:30 PM
January 25 - February 22
(No class February 15)
Boone County High School, OR
Thursdays, 6:30-8:30 PM
February 18 - March 11
Conner High School
Cordella Fuentes

SPANISH FOR THE EVERYDAY WORLD-LEVEL II

This four-week course is designed to provide a continuation of Level I Spanish, with emphasis on "real world" communication, advanced phrases and usage. This class may prove especially helpful to not only the general public, but also to professionals such as educators, police officers, health care personnel, government employees, etc.

\$40
Thursdays, 6:30-8:30 PM
March 15 - April 4
Boone County High School
Cordella Fuentes

SPLIT ROCK CONSERVATION PARK HIKE

Experience the beauty and diversity of Split Rock Conservation Park. Join this exciting and educational outdoor program for people of all ages to experience our local natural treasures. A guided, interpretive hike will allow everyone to investigate one of Northern Kentucky's most unique natural areas. Experience native grasslands, forest and wetlands as well as the famous Split Rock glacial formation deposited in this area over 100,000 years ago.

\$10
Saturday, April 17, 9 AM-Noon
Split Rock Conservation Park
Mark Jacobs

SWING DANCING

See why the Swing has been so popular throughout the ages as you dance to the music of the 70s, 80s, and 90s till now! Remember smoothed soled shoes make learning to dance so much easier and partners are helpful!

\$45
Mondays, 8:30 - 9:30 PM
January 25 - March 1
(No class February 15)
Conner High School
Carolyn Rollin

Class listings continued on page 17

When Times Get Tough, It's Time to Get to Your Public Library!

The price of fuel is up. The price of bread, milk, and eggs is up. Unemployment is up. And, so too, is public library use. Repeated studies have shown that, when dollars shrink and expenses grow, people tend to rely more on their public library for materials and services they might otherwise purchase. That is certainly true here in Boone County.

In the first three months of fiscal year 2009, borrowing increased more than 18 percent over just one year ago — an increase of 70,500 books, magazines, movies, and music. During those same three months, 3,522 Boone County citizens got a library card, 31,562 people had their information/homework questions answered by librarians and 15,168 children, teens and adults attended library programs.

Haven't been to the library lately? Here are some ways you can save money at the library:

BORROW, DON'T BUY

Don't spend \$25 on a book you'll read once, borrow it. An audiobook makes your commute more enjoyable — especially when borrowing it saves you \$40. Saving money by doing it yourself? Save even more with "how to" books and DVDs from the library.



GET ONLINE



High speed internet access can cost over \$40 month. In some areas of Boone County, it isn't available at all. Every branch of the library offers free internet access and computers with Microsoft Office. At Main, Scheben, Florence, and Walton, you can bring your own laptop and use the free wireless network. No laptop? You can borrow one at Main, Scheben, or Florence to use in a study room or any other location in the library.

More
great
services
your
library
offers —
Total
Value:
Priceless!

USE LIBRARY RESOURCES TO FIND A JOB



The library has books and online resources to help you create or update your resume. Use the library's computers with Microsoft Word to type and print your resume and then search online for places to send it. Our reference librarians at all branches are waiting to point you in the right direction and help you get started. Check the library's monthly newsletter for classes and workshops in 2010 to help you with your job search and interviewing skills.

LEARN SOMETHING NEW

Each month, the library offers as many as 40 different programs for adults — from painting to manag-

ing diabetes to setting up your first e-mail account. Not only will the learning keep your brain young,

there's compelling evidence that social interaction is important to your overall well-being. And it's free.

KEEP UP WITH THE NEWS

The library subscribes to 839 magazines and newspapers — from *Aviation Weekly* to the *The Wall Street Journal* — so you don't have to. Enjoy the latest issue over a cup of coffee at the library. Older issues of magazines can be borrowed to read at home.



Save money on subscriptions to magazines and newspapers! Borrow from the library's extensive collection.

DELIVERING SERVICES TO YOUR DOOR

BCPL's Homebound Service delivers books, movies, music and a smile to over 400 Boone County residents each month. Some live in their own homes, others in retirement centers, nursing homes, and special needs facilities. Free homebound delivery is available to any Boone County resident unable to visit the library.

Over 400 Boone County residents receive library materials delivered to their homes each month.



FREE ENTERTAINMENT

Tickets for you and your family to attend a concert, puppet show, or theatrical performance are expensive. On one Friday evening in August, over 300 people came to the library to sing along with 'Elvis' — for free. Whether it's a local musician, a Kentucky Chautauqua performer, or Madcap Puppet Theatre, count on the library for at least one family activity every month — tickets not required.



DELIVERING SERVICES TO YOUR DESKTOP



www.bcpl.org delivers a variety of library services directly to your home, office, or handheld computer. Get answers to your questions 24/7 from askwhyky.org — live online help from library professionals. Download books, audiobooks, videos, and music any time night or day. Keep up with what's

going on at the library and with your favorite books and authors — subscribe to a library newsletter delivered directly to your email address. Find the full text articles you need for your research paper, business proposal, or personal interest in dozens of specialized online research tools.

PRESERVING BOONE COUNTY'S HISTORY AND HERITAGE

Since its beginning, the library has worked to acquire all available material about Boone County's history.

Last year, more than 500 family files from the recently acquired Anne and William Fitzgerald collection and other local families were added to the collection. Through the cooperation of local residents, and with the aid of digital technology, over 1500 privately owned photos, journals, letters, and documents were digitized and are being added to the online collection.

Much of Boone County's history has never been put down on paper — it lives in the memories of its residents. To preserve those memories, the library is developing a collection of personal interviews with people



from all walks of Boone County life. 150 oral history interviews, many conducted in the early 1980s, will soon be available in audio and print.

Two special projects, now completed, document the history of Boone County farming to present day and the history of Boone County's early African American families.

The library's Oral History Program is the largest among Kentucky's public libraries. To bring

local history into the community, the library has partnered with the City of Walton, Boone County Historic Preservation and Boone County Parks to offer family events such as the Burlington Ghost Walk, Gaines Tavern programs, and the Burlington Wayfinder project. See the Local History Department's newest addition, *Chronicles of Boone County*, at bcpl.org/lhg/cbc.

LAST YEAR ...

You borrowed 1,485,888 books, movies, magazines, music and software. Based on average local retail and rental costs for those items, you could have spent ... **\$22,688,688**

You searched the library online research tools 164,594 times to read, print or download full text documents. Based on an average cost of \$20 for commercial online document delivery, you could have spent ... **\$3,231,880**

You used library computers 218,490 times to do homework, stay in touch with friends, look for a job, write a resume, plan your vacation, and get the best deal on your new car. FedEx Offices's charges \$12 per hour. You could have spent ... **\$2,621,880**

375 community groups, businesses, and clubs used library meeting rooms to hold 1030 meetings. Most meetings lasted at least two hours. Based on a commercial rental rate of \$50 per hour, you could have spent ... **\$103,000**

You borrowed 2,462 books from libraries across the country and around the world. Many of these were out of print and could not have been purchased. At an average cost of \$25 for interlibrary loan, you could have spent ... **\$61,550**

66,432 people, ages birth through adult, attended 3,734 library programs. At a minimal cost of \$6 per person, you could have spent ... **\$398,592**

TOTAL VALUE OF THESE BASIC SERVICES:
\$29,105,590

Boone County Public Library

Over 300
preschool
children
attend
storytime
with a parent,
grandparent
or other
caregiver in a
typical week.

HELPING EVERY CHILD SUCCEED



The library offers more than 750 story times each year. During every story time, while your children learn to love books and libraries, you will learn simple and fun ways to help your children acquire the critical skills they need to learn to read and write in school. Over 300 preschool children attend story time in a typical week.

As a partner with Boone County Success by 6[®] and the Boone County Early Childhood Council, the library helps support the efforts of local preschool and daycare centers to provide the highest quality childcare to Boone County children. Library staff with Kentucky Early Childhood Trainer credentials offer training in early literacy programming. Centers borrow from a collection of more than 30 classroom story and theme kits. The Community

Center on Wheels visits 30-45 centers, checking out books and providing story time to over 1200 children each month.

With an extensive collection of books on everything from inventions to American Indian tribes, the library supports the curriculum of the county's public, private, and home schools. Each year, more than 1000 elementary students visit the library to get cards and borrow books. For classes that can't visit, the library puts together special collections for extended loan. Last year, the library provided 422 classroom collections.

And during those long summer months, weekly programs, family events and the friendly competition of BCPL's Summer Reading Program keep Boone County kids reading.



Use your
library
resources and
save money!



Boone County Public Library

Six locations to serve you!
One phone number: 859/342-BOOK (2665)

Main Library
1786 Burlington Pike
Burlington, KY 41005

Florence Branch
7425 US 42
Florence, KY 41042

Scheben Branch
8899 US 42
Union, KY 41091

**Chapin Memorial
Library**
6517 Market Street
Petersburg, KY 41080

Lents Branch
3215 Cougar Path
Hebron, KY 41048

Walton Branch
21 S. Main
Walton, KY 41094

Explore Your Interests, cont.

NEW! **WRITING NOVELS**
— THE REALITY OF
FICTION

In this introduction to the world of writing novels, learn about commercial genres, reader expectations, the necessity of structure, keeping yourself on track and a glimpse into the world of publishing. Taught by an award-winning novelist. Minimum of 6 students required to hold session.
\$20
Thursday, February 25, 6:30-8:30 PM
Camp Ernst Middle School
Patricia McLinn

NEW! **WRITING FICTION**
SERIES

NOTE: Students must have taken "So You've Always Wanted to Write a Novel..." class or receive a waiver from instructor to register for class. Minimum of 7 students to hold class. All classes will be held at the Boone County Public Library, Burlington. Instructor for all classes in series is Patricia McLinn.

Writing Fiction: Structure

Learn the framework for dramatic writing structure. How to make it work for your story.

\$30
Tuesday, March 9, 6:30-9 PM

Writing Fiction: Characterization

Create realistic and memorable characters. Add point of view, goals, motivation, conflict to your tools.

\$30
Thursday, March 11, 6:30-9 PM

Writing Fiction: Plot

Bring characters and structure together into a coherent whole. Scene and sequence, reversals, subplots.

\$30
Tuesday, March 16, 6:30-9 PM

Writing Fiction: Dialogue

Make your characters do more than talk — get them to speak to the readers.

\$30
Thursday, March 18, 6:30-9 PM

Writing Fiction: Description

Turn description from a potential black hole to a tool that serves your story.

\$30
Tuesday, March 23, 6:30-9 PM

Writing Fiction: Wrapping Up

Pulling off the memorable finish. Plus, fine-tuning that can make or break your fiction.

\$30
Thursday, March 25, 6:30-9 PM

Writing Fiction: The Business of Publishing

Markets, proposals, revisions and royalties.

\$30
Tuesday, March 30, 6:30-9 PM

ENHANCE YOUR
WELLBEING

NEW! **ADULT GOLF**
EDUCATION

Get into the swing of things with this five-session fun class. This class will cover all aspects of the game including the breakdown of the full swing. Class size is limited to 10 people.

\$80
Tuesdays & Thursdays, 6:15-7 PM
March 16 - 30
The Golf Ranch
Brian Nitschke

BEGINNER SHOTOKAN
PROGRAM

Students will learn the basic karate techniques as well as self-defense. Parents and children are encouraged to participate. Our program builds self-esteem and confidence and promotes physical/mental discipline.

\$23
Thursdays, 7-8 PM
March 4 - 25
Ockerman Middle School
Sensei Shawnie Haskell

BOATING SKILLS AND
SEAMANSHIP

Education is the key factor in the prevention of boating accidents. This informative class will introduce basic piloting, navigation skills, safe boating and water safety regulations. This course is a must for new boaters and families.

\$5 tuition to BC Community Ed., plus \$45 for textbook, payable first night of class.
Tuesdays & Thursdays, 7-9 PM
February 16 - March 16
City of Edgewood Building
USCG Auxiliary Instructor

DODGEBALL FOR AGES 25
& OVER

Remember when you played this as a child? Well, it's back with a new twist. It's fast! It's fun!

\$20
Tuesdays, 7-8:30 PM
January 26 - March 2
Goodridge Elementary
Boone County Parks Staff

HORSEBACK RIDING—
BEGINNING ADULT

It's never too late to learn how to ride and enjoy the wonderful world of horses. Students will learn horse handling and safety, grooming, tacking up and clean up, in addition to horseback riding.

\$200
Thursdays, 11 AM-1 PM
April 1 - 29
Northern Kentucky Horse Center
Diane Dineen

NEW! **JUNIOR GOLF**
EDUCATION

Five-session fun class will teach your child about the game of golf. Class will cover structured aspects of the game and excite young people about golf while instilling values integral to the game. Ages 5+. Class limited to 8.

\$80
Tuesdays & Thursdays, 5:30-6:15 PM
March 16-30
The Golf Ranch
Brian Nitschke

LADIES SELF DEFENSE

Students will learn easy-to-use techniques that require little strength.

\$30
Thursday, April 8, 7-9 PM
Ockerman Middle School
Shawnie Haskell

NEW! **SMART CYCLING —**
TRAFFIC
SKILLS 101

Ride your bicycle with confidence in any cycling environment from multi-use paths, to quiet country roads, to commuting to work on busy city streets. Instructors are certified by the League of American Bicyclists. Successful graduates will receive certification and could qualify to take the League's Instructor Certification program. Bicycle in good mechanical condition and helmet required. Fee includes instruction book. For ages 18+ (Ages 16 to 18 w/parental permission, ages 14 to 16 must be accompanied by participating parent.)

\$65
Tuesdays & Thursdays, 6-8:15 PM
April 20, 22, 27 & 29
Conner Middle School
Ralph Mitchell

VOLLEYBALL FOR AGES
25 AND OVER

Volleyball players ages 25+ are invited for 6 weeks of open volleyball. Park staff will organize teams upon arrival for an evening of volleyball. National Federation of High School Rules govern. Program limited to 20.

\$30
Mondays, 6:30-8:30 PM
February 1 - March 15
(No class February 15)
Goodridge Elementary School
Boone County Parks Staff

IMPROVE
YOURSELF

NEW! **A WOMAN'S GUIDE**
TO MONEY VALUES

Learn about investing by translating your values into goals. Women can get all their questions answered about investing their hard-earned money!

\$5
Tuesday, March 23, 6:30-8 PM
Yealey Elementary
Kelly Malatesta

ACADEMIC SKILLS
IMPROVEMENT

Individualized refresher course on grammar, math, and/or reading skills. Prepare yourself for job placement, job promotion, post-secondary education, and/or self-improvement.

No cost
Call 282-4629 for times and dates
Adult Education Center
Gateway Comm. & Tech. College
Adult Education Staff

BASIC READING ASSISTANCE

The Boone County Adult Education Center offers private tutoring sessions for qualified adult learners to improve their reading and/or writing skills. This service is available Monday through Friday by appointment.

No cost
Call 282-4629 for times and dates
Adult Education Center
Adult Education Staff

CITIZENSHIP CLASSES

Take the opportunity to study for the United States Citizenship test. Course covers the steps necessary to apply for U.S. citizenship, where to get the forms, and reviewing information needed to pass the test.

No cost
Call 282-4629 for times and dates
Adult Education Center
Adult Education Staff

CIVICS

This class offers international students the opportunity to learn more about our city, county, state, and federal government and how it works. Classes are designed to familiarize international adults with local services, such as banking, schools, etc.

No cost
Call 282-4629 for times and dates
Adult Education Center
Adult Education Staff
Mann Elementary
Janis Linville

NEW! **CUTTING MORE**
THAN COUPONS

Learn how to cut your grocery and household materials budget in half. You will learn about coupons sources, store match-ups and "Super Doubles." Learn the difference between manufacturer coupons, store coupons, e-coupons and printable coupons.

\$20
Tuesdays, 6:30-8:30 PM
February 2 - 23
Burlington Elementary
Lee Abdon

ENGLISH AS A SECOND
LANGUAGE

Adult students learn to speak and use English, learn about other cultures and meet new people.

Proper pronunciation, grammar and conversation skills, and skills needed to obtain employment will be covered. Students are encouraged to use the computer-aided English lessons in addition to attending class.

No cost
Call 282-4629 for times and dates
Adult Education Center
Adult Education Staff

G.E.D. (HIGH SCHOOL
COMPLETION)

Boone County Adult Education offers daytime and evening sessions to prepare for the GED test. Individualized instruction offered at no cost. The Adult Education Center is a certified GED "test-readiness" site and "official" GED testing site.

Cost of test is \$40
No tuition
Call 282-4629 for times and dates
Adult Education Center
Gateway Comm. & Tech. College
Adult Education Staff

NEW! **IMPROVE YOUR**
WRITING

Stand out as a concise and precise writer in business and everyday communications. This crash course includes tips in approach, structure and editing your material. Learn how to avoid pitfalls and how to find your strengths. Taught by a former editor for the Washington Post. Minimum of 6 students required.

\$40
Thursday & Tuesday, 6:30-9 PM
February 18 & 23
Camp Ernst Middle School
Patricia McLinn

PARENTS AROUND THE
WORLD (PAW CLUB)

Parents Around the World is an English class for mothers of young children. Bring your children (birth-age 3), learn English, get parenting pointers, take-home activities and more!

No cost
Call 282-4629 for times and dates
Adult Education Center
Adult Education Staff

Improve Yourself, cont.

NEW! SAVVY SOCIAL SECURITY PLANNING

Gain knowledge that will enable you to plan financially for your Social Security in your overall Retirement Plan. Learn how Social Security works, how to boost benefits by increasing current earnings, when to apply for Social Security and coordinating spousal benefits. \$5
Monday, March 22, 6:30-7:30 PM
Mann Elementary School
Ron Buckley

WORKPLACE BASIC SKILLS

This service is provided by the Boone Co. Adult Education Center to improve math, reading, and writing skills for a new job, job training, advancement and/or promotion. Assessment included. Remedial assistance provided. Pre-employment testing available by appointment.
No cost
Call 282-4629 for times and dates
Adult Education Center
Gateway Comm. & Tech. College
Adult Education Staff

ENCOURAGE YOUTH AND FAMILY

BABYSITTING

8-hour course for youth ages 11 and up focuses on the responsibilities of a babysitter: prepare for a job, accident prevention, diapering, feeding, emergency first aid, rescue breathing and choking prevention procedures, and more. Participants receive American Red Cross certificate upon completion. Must complete required number of hours to receive certificate and must attend all four classes; no make-up classes. Class limited to 10. Bring all required supplies to first class. \$30
Thursdays, 6-8 PM
January 21 - February 11
Boone County High School, OR
February 25 - March 18
Conner High School
Jill Coulter

NEW! ENGLISH LANGUAGE INSTRUCTION FOR PARENTS

Come join us to learn introductory English. Childcare will be provided. Contact Melissa Raper at 282-4620 to register.
Free
Wednesday, January 13, 6-7 PM
Ockerman Elementary

NEW! ENGLISH LANGUAGE INSTRUCTION FOR PARENTS & PRESCHOOL CHILDREN

English as a Second Language for parents and children 1-6 yrs. Learning together through the use of Leap Frog programs. Families will have a loan of a Leap Frog program for use at home for 4 months. Parents must attend two training sessions. Contact Anna Marie Tracy at 334-3792 to register or Annamarie.tracy@boone.kyschools.us
Free
Wednesday, January 13, 6-7 PM
Ockerman Elementary

KY's INDIVIDUAL LEARNING PLAN (ILP) INFORMATION SESSION

The web-enabled Individual Learning Plan (ILP) helps secondary students (grades 6-12) better focus their coursework on individual goals as they prepare for postsecondary studies and careers. This session provides hands-on experience for parents/students. ***There is no charge for the session, but registration is required.***
No tuition

Boone County High School:
Thursday, February 18, 7 PM

Conner High School:
Thursday, January 21, 6:30 PM

Cooper High School:
Thursday, January 21, 6-7 PM

Ryle High School:
Monday, February 15, 4-6 PM

Camp Ernst Middle School:
Thursday, January 28, 7 PM

Conner Middle School:
Thursday, February 25, 6 PM

Gray Middle School:
Wednesday, February 3, 7-8 PM

Ockerman Middle School:
Thursday, January 28, 7-8 PM

R.A. Jones Middle School
Thursday, January 28, 6:30-8:30 PM

Walton Verona High School:
Monday, February 8, 7 PM
School Staff

NEW! PARENT LEADERSHIP DEVELOPMENT

Learn how schools work, how parents can impact their children's education and future career, and how parents can make a difference in our school community. Visit Gateway Community College and NKU. Attend a School Board Meeting. Series of 9 sessions. Child care provided. Attend as many sessions as possible. Contact Anna Marie Tracy at Annamarie.tracy@boone.kyschools.us or 334-3792 to register.
Free
January 26, February 9, 16 & 23, March 4, 18 & 25, April 1 & 8
6:30-8 PM
Boone Co. Staff Development Center

NEW! PARENT READY FOR SCHOOL

Three 2-hour programs to help parents successfully navigate their child's education. These sessions will increase parents' skills, knowledge and confidence in their connection with schools, increase parents' ability to support their children in transition to K and beyond and equip parents to take advantage of opportunities for the children. For preschool parents in transition to Kindergarten. Contact Anna Marie Tracy 334-3792 to register or Annamarie.tracy@boone.kyschools.us
Free
March 16, 23 & 30, 6-8 PM
Boone Co. Staff Development Center

NEW! PASSPORT FOR SUCCESS

This 3-session program is designed to help parents work with their students on how to manage time, listen and concentrate; manage homework; prepare for and take tests; take notes and organize information; improve their memory, thinking and reading skills. Program assists parents in making a strong connection between home and school. Parents are encouraged to attend all three sessions. Contact Anna Marie Tracy at Annamarie.tracy@boone.kyschools.us or 334-3792 to register.
Free
Mondays, 6-8 PM
February 22, March 1 & 8
Ockerman Middle School

NEW! S.T.E.M. CAREER AWARENESS

Science, Technology, Engineering and Mathematics awareness evenings for parents and students grades 6-10. This program presents an exciting view of STEM careers and the reasons why we need more students involved in STEM careers. Information and hands-on activities for parents and students. Contact Anna Marie Tracy at Annamarie.tracy@boone.kyschools.us or 334-3792 to register.
Free
Thursdays, 6-8 PM
February 4 or 25
Boone Co. Staff Development Center

START SMART BASKETBALL

This 7-week program is offered for 3- to 5-year-olds along with a parent or other adult and will include basics. (First week is a "parent-only" meeting.) Each child will receive a jersey, 4 cones, soft basketball, mini-basketball and learning manual. This class fills fast. Enrollment is limited. \$62
Thursdays, 6-7 PM
February 4 - March 18
First week for parents only
Camp Ernst Middle School
Boone County Parks Staff

START SMART SPORTS DEVELOPMENT

A 7-week instructional program which helps parents work one-on-one with their 3-5 year old child teaching motor skills like throwing, catching, kicking and hitting. A parent or other adult must attend each session with their child. This class fills fast. Enrollment is limited due to space. \$42
Wednesdays, 6-7 PM
February 3 - March 17
Camp Ernst Middle School
Boone County Parks Staff

TAE KWON DO FOR KIDS AND ADULTS

This 4-week class is designed to improve the physical and mental skills of junior and adult students; provide self-defense training and increase self-esteem. We encourage parents to participate with their children. Self control and discipline will be promoted. Class size limited to 20. \$23
Wednesdays, 6-7 PM OR 7-8 PM
March 3--24
Boone County High School
Mikie and Sue Survant

TWO MILLION MINUTES

This 54-minute film is a can't-miss documentary for all parents and community members. Global competition is here and it will affect our children's future. View this film and subsequent discussion to analyze your own perspective on US education and the dedication it takes for a successfully competitive future. No registration required. Contact Anna Marie Tracy at 334-3792 or Annamarie.tracy@boone.kyschools.us
Free
Monday, January 11, 6-8 PM
Ockerman Middle School, OR
Monday, February 1, 6-8 PM
Camp Ernst Middle School, OR
Monday, March 15, 6-8 PM
Gray Middle School

THESE LOCATIONS WELCOME COMMUNITY EDUCATION:

- Boone County Adult Education Center
99 Center Street, Florence
- Boone County Arboretum
9190 Camp Ernst Road, Union
- Boone County Cooperative Extension
6028 Camp Ernst Road, Burlington
- Boone County Fair Grounds
5819 Idlewild Road, Burlington
- Boone County High School
7056 Burlington Pike, Florence
- Boone County Public Library
3215 Cougar Path, Hebron
- Boone County Public Library
1786 Burlington Pike, Burlington
- Boone County Public Safety Campus
3000 Conrad Lane, Burlington
- Boone County Staff Development Center
99 Center Street, Florence
- Boone Woods Park
Hwy 18 & Veterans Way, Burlington
- Burlington Elementary School
5946 Orient Street, Burlington
- Camp Ernst Middle School
6515 Camp Ernst Road, Burlington
- Central Park
9190 Camp Ernst Road, Union
- Conner High School
3310 Cougar Path, Hebron
- Conner Middle School
3300 Cougar Path, Hebron
- Cooper High School
2855 Longbranch Road, Union
- Crouches Treasure Lake
Lawrenceburg Ferry Road,
Petersburg
- Edgewood City Building
385 Dudley Pike, Edgewood
- Erpenbeck Elementary School
9001 Wetherington Blvd, Florence
- Florence Elementary School
103 Center Street, Florence
- Gateway Community & Technical College
500 Technical Drive, Florence
- The Golf Ranch
5390 Limaburg Road, Burlington
- Goodridge Elementary School
3330 Cougar Path, Hebron
- Gray Middle School
10400 US 42, Union
- Mann Elementary
10435 US 42, Union
- New Haven Elementary School
10854 US 42, Union
- Northern Kentucky Horse Center
13463 Poole Road, Verona
- Ockerman Elementary School
8250 US 42, Florence
- Ockerman Middle School
8300 US 42, Florence
- Old Parks Office
2961 Gallatin Street, Burlington
- Petersburg Community Center
6517 Market Street, Petersburg
- RA Jones Middle School
8000 Spruce Dr., Florence
- Ryle High School
10379 U. S. 42, Union
- Stephens Elementary School
5687 Highway 237, Burlington
- Split Rock Conservation Park
4503 Belleview Rd, Petersburg
- Walton-Verona High School
30 School Road, Walton
- Yealey Elementary School
10 Yealey Drive, Florence

For information about any of these classes, please visit our website: www.boone.kyschools.us, select District Office, choose Community Education; or call 859/282-3314.

2010 Census Questionnaire — Easy, Important, Safe

With only 10 questions, the 2010 Census questionnaire takes approximately 10 minutes to complete. Households are asked to provide key demographic information, including whether a housing unit is rented or owned, the address of the residence and the names, genders, ages and races of others living in the household.

By law, the Census Bureau cannot share an individual's responses with anyone, including other federal agencies and law enforcement entities.

Frequently Asked Questions

1 Who should fill out the Census questionnaire? The individual who owns or rents the housing unit on behalf of every person living in the residence, including relatives, will fill out the form.

2 How will the 2010 Census differ from the 2000 Census? In 2010, every residence will receive the short questionnaire of 10 questions. More detailed information previously collected through the decennial census will be asked of a small percentage of

the population through the annual American Community Survey.

3 How is Census data used? Census data is used to determine the allocation of federal funds for community services such as school lunch programs, senior citizen centers and new construction such as highways and hospitals.

4 What kind of assistance is available to help people complete the questionnaire? The 2010 Census questionnaire is available in a variety of languages. Questionnaire Assistance Centers (QAC) will be created to assist those unable to

read or understand the questionnaire. Large print questionnaires are also available to the visually impaired upon request, and a Teletext Device for the Deaf (TDD) program will help the hearing impaired.

5 How does the Census Bureau count people without a permanent residence?

In-person counts of people living in college dorms, military barracks, nursing homes, hospitals and homeless shelters will be made.

KEY 2010 CENSUS DATES



March 2010	Census questionnaires delivered to residences
March/April, 2010	Be Counted Program Begins - Census questionnaires also available at public sites
April 1, 2010	Census Day
May/July, 2010	Census takers visit households that did not return a questionnaire by mail
December, 2010	By law, the Census Bureau delivers population counts to the President

Pleasant Valley Roadwork

The Kentucky Transportation Cabinet is continuing its effort to invest in major roadway reconstruction along Ky. 237 in multiple phases. Substantial work has been completed on the section located in Hebron, generally the area north of I-275. Final work on this section will not be completed until spring 2010. The next phase of scheduled work includes the section of Pleasant Valley Road (Ky. 237) from U.S. 42 west to Rose Petal Drive. This \$8 million dollar phase has been scheduled for a bid opening by the State in January 2010



with construction to begin shortly thereafter. This project is estimated to take approximately 18 months to complete.

Boone County Fiscal Court



2950 Washington St.
P.O. Box 900
Burlington, KY 41005-0900
phone: 859/334-2100
fax: 859/334-3105

2010 Boone County Fiscal Court

Gary W. Moore, Judge/Executive
Cathy H. Flaig, Commissioner
Dr. Charles Kenner, Commissioner
Terri Moore, Commissioner

Join Boone Links and Lassing Pointe

Purchase Your Season Pass Today

Boone Links Pro Shop is open daily 9 am - 4 pm for membership subscriptions at both courses.

Memberships include both Lassing Pointe (18 Holes) and Boone Links (27 Holes)

Senior Membership (Ages 60 and up)	\$ 600
Individual Membership (Ages 18 - 59)	\$ 850
Family Membership (Same Household)	\$1,200
Junior Membership (18 & Under – Boone Links Only)	\$ 250
Non-Resident Memberships Additional	\$ 100

Season Pass entitles members to unlimited golf for a daily fee of \$3. Membership play is valid daily (after 1 pm on weekends at either course and after 1 pm on Fridays at Lassing Pointe). Membership play is not valid on Holidays – See Pro Shop for details.

Gasoline carts are available for an additional rental. Memberships are sold on a calendar year basis and will expire December 31, 2010. Lassing Pointe is closed Dec. - Feb.; however, Boone Links is open year round, weather permitting.

Available for Your Special Events!



Both Golf Course clubhouses are available for your special events. Call Jeanni Reusch at 859/334-4853 to reserve our banquet facilities. Full catering menu is available.

Boone Links Golf Course: 19 Clubhouse Drive, Florence, KY 41042 • 859/371-7550
Lassing Pointe Golf Course: 2266 Double Eagle Drive, Union, KY 41091 • 859/384-2266

www.boonecountyky.org/golf.aspx

Employee Spotlight



Jeanni Reusch

Unless you are a golfer, you may not know much about the two county golf courses, Lassing Pointe and Boone Links. One of the well-kept secrets to our success is the team management approach at our courses made up of Jeanni Reusch, Business Manager, Russ Gartner, Golf Pro and Greg Bulmer, Grounds Superintendent. Jeanni Reusch has

served with the county since July of 1995 and has worked at our golf courses since 1997. Jeanni has been responsible for many recent upgrades at our courses including improved concessions, enhanced marketing and a restructured family membership program to name a few. These improvements have occurred as staffing levels have decreased and

net revenues have increased! All of these changes focus upon improving the golf experience at our courses as well as the financial self-sufficiency of golf operations.

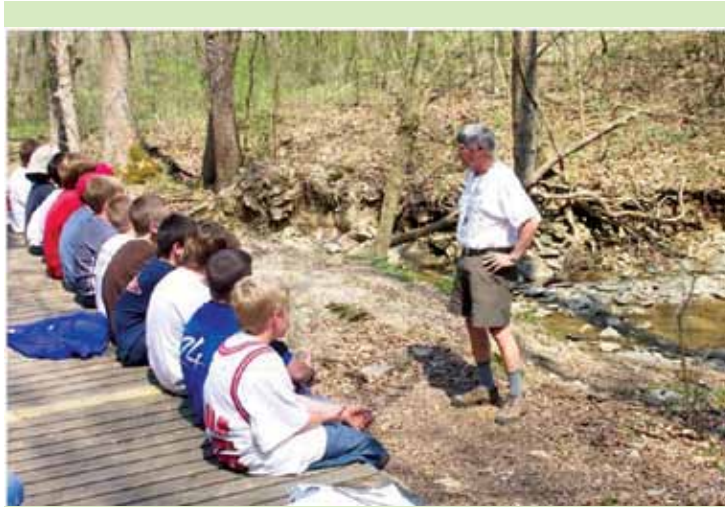
Jeanni is married, has three grown children and one grandchild and resides in the Verona area.

Spring Environmental Education Program

According to a study done by the National Environmental Education Foundation, "Fully 95 percent of adults and 96 percent of parents support the practice of teaching school children about the environment." These statistics alone show the importance of environmental education, and how imperative it is to continue the program the Boone County Cooperative Extension Service has established.

For over 25 years the Boone County Cooperative Extension Spring Environmental Day Camp Program has seen incredible growth and change. Starting with just three schools, it has grown to 15 elementary schools. Primarily fourth grade classes attend the day-long educational program. Annually, more than 1,200 young people and their teachers and volunteers participate. The program has shown significant effect on student test scores in the schools.

There are four classes that the students participate in throughout the day. In the stream study class, students analyze the biological makeup of the stream and the animals that inhabit it. During the rotten log activity, participants delve into decomposition and the world inside of a rotten log. The soils



According to the post-camp evaluation, over 90 percent of the students that attended the day camp increased their understanding about the environment and how it operates than when they first showed up. This is a good indication that the children are becoming more aware of what is going on outside in the natural world.

activity teaches about the types and makeup of soil. In tree identification the students are given a list of trees and must identify them based on the leaf, bark and flower.

According to the post-camp evaluation, over 90 percent of the students who attended the day camp increased their understanding about the environment and how it operates.

This is a good indication that the children are becoming more aware of what is going on outside in the natural world. All (100 percent) of the participating teachers approve highly of the program. One teacher said, "... very hands-on way to review or supplement our living science curriculum ... and thanks for the opportunity."

In the spring of 2011, we will be opening a new and exciting chapter to the program with Boone County Cooperative Extension Environmental and Nature Center. Located just down the road from the Boone County Cooperative Extension Service on Camp Ernst Rd., part of this land will be developed into four outdoor classrooms, a covered shelter, an amphitheatre, and trails leading to each classroom area. There also will be a wildlife viewing area where children in the classes can look at the wildlife without the wildlife being able to see them. There will be two ponds located on the facility: a vernal pond and a year-round pond. The vernal pond will be the focal point of our pond study and micro invertebrate class.

With this new addition, and the growing population of our program, there is no doubt that more success stories are in store. The Boone County population continues to increase, and the potential for growth of Cooperative Extension's environmental education efforts is endless. By giving our schools the opportunity to use the Boone County Extension Environmental and Nature Center, we allow the children to embrace the environment and their own potential.



6028 Camp Ernst Road
P.O. Box 876
Burlington, KY 41005
phone: 859/586-6101
fax: 859/586-6107



Disabilities accommodated with prior notification.

TANK Prepares for Florence Hub

Over the next several months, TANK plans to build a transit hub in Florence, adjacent to Mall Road. The hub will allow for easier access to the TANK system for residents, shoppers and employees in Boone County. The hub will also offer the ability for bus riders to use the hub to transfer between buses in Boone County, giving them access to additional options of locations/bus routes without going to Covington or Cincinnati to transfer.

The hub was conceptualized in TANK's 2006 transit network study. During that study, several transit hubs were recommended to be placed around Northern Kentucky to connect suburban areas.

"In the past, TANK needed to focus on getting people to and from the downtown area to get to work," said TANK Deputy General Manager Andy Aiello. "Through our study we found that today, an increasing number of people live and work in the suburbs.

TANK needed to find better ways to help people travel between different suburban areas."

The Florence hub will be TANK's second transit hub; the first opened in Fort Wright in January 2008. Construction is expected throughout the spring of 2010, with an opening sometime in mid-2010.

Once completed, the hub will be a pedestrian-friendly point in the center of the Mall Road Shopping District. Riders will be able to easily

get from the Florence Transit Hub to the Florence Mall or other areas along Mall Road where they can work, shop, eat and play.

The Florence Hub project is being funded with a grant from the federal Congestion Mitigation and Air Quality (CMAQ) Program. The hub, once complete, will show an air quality benefit by reducing single occupancy vehicle miles driven by making transit more accessible in Boone County.

Winter Weather Is Here



If you're like many people, one of the things you dread most about winter is all the things you have to do in order to drive to work...

- Standing outside filling the gas tank.
- Scraping layer after layer of ice and snow off of the car window.
- De-icing the car locks and door handles.
- Shoveling the car out of the driveway.

And that doesn't even consider the difficulty most of us have driving in the snow and ice.

This year, try something new — give TANK a try this winter! Pile on an extra layer of clothing and a pair of snow boots and head to the nearest bus stop with a good book. Let a professional do the driving — you'll be glad you did!

Call 331-TANK or visit www.tankbus.org for schedule and route information.

TANK in Boone County

Routes:

- 1 Florence
- 1X Florence Express
- 2X Airport Express
- 22X Walton Express
- 28X Empire Drive Express
- 29X Hebron Express
- 32X Burlington Express

Park and Ride

Locations:

- Biggs – Houston Rd. (1X)
- Burlington Park and Ride (32X)
- Hebron Lutheran Church (29X)
- Mt. Zion Park and Ride (22X)
- Houston Road Park and Ride – near the corner of Commonwealth Rd. on Houston Rd. (just north of Citi) (1X)

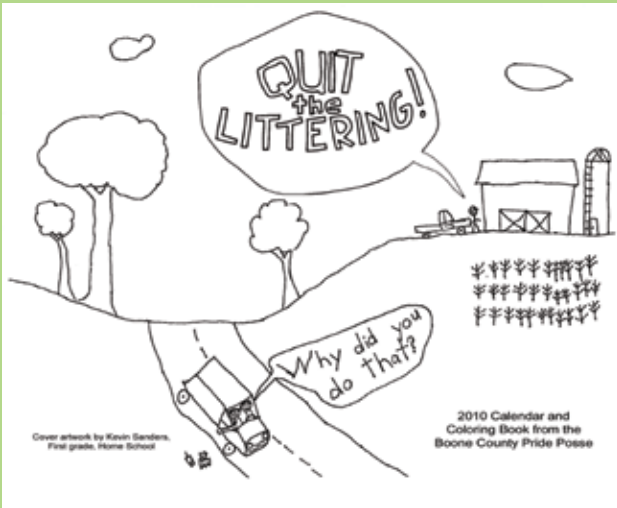
TANK



Information Line:
859/331-TANK
www.tankbus.org



Congratulations to Our Anti-Litter Contest Winners!



Artwork for the cover of the 2010 Anti-Litter Calendar was created by first grader Kevin Sanders.

We are thrilled to announce the winners of the 2009-2010 “Quit the Littering!” Coloring Calendar Contest! The contest, which was open to all elementary-age children in Boone County, asks the youngest among us to use their creativity in spreading the message that they are sick of litter. We received 234 entries from New Haven Elementary, Yealey Elementary, Mann Elementary, Erpenbeck Elementary, Ockerman Elementary, Goodridge Elementary, and Stephens Elementary, as well as from home-schooled students. The entries were amazing and we’d like to sincerely thank all school principals, teachers, and parents for making it so awesome!

All winners were recognized by Boone County Judge/Executive Gary Moore at the Fiscal Court meeting

on Tuesday, December 22. Winners will also soon be featured on Boone County’s website at www.boonecountyky.org/bcswm.

Special thanks are given to the Boone County Board of Education and to the Walton-Verona Board of Education. “Thank you” to judges Jo Haltermon, Melissa Mann, Alison Thiessen and our new judge Megan Seilhamer. And of course, a great big “thank you” goes to all the students who submitted entries — your work was totally amazing! Calendars and posters are in the process of being printed and will be available before the students leave on Christmas break.

For more information, please call or email Kelly at kchapman@boonecountyky.org.

Recycle News

Love Your Bin, PLEASE

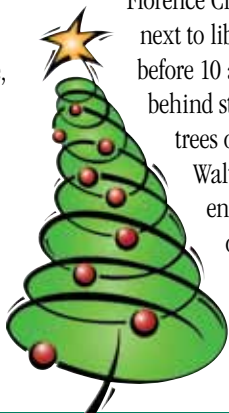
We know you recyclers care about the planet, the environment and our program. Unfortunately, there are some knuckleheads out there that are trashing our bins. If you see someone dumping trash and debris at any of our recycling bins, please let us know. This is happening frequently at the Hebron bin. The consequence of constant trash dumping is that we’ll have to remove the bin. If you see anything suspicious out there, give us a call or email.

Recycle That Christmas Tree

Boone County recycling is branching out! The after-holiday quandary

of Christmas tree disposal has been solved by Christmas Treecycling, a free Christmas tree recycling service.

Drop-Off Locations — On Saturday, January 9, 2010, you may drop off your trees at the following locations: the old Flick’s parking lot at Tanner’s Station off North Bend Rd. (Before 4 pm); the Farmer’s Market on KY 18 and Camp Ernst (drop trees off before 8 am); the Old Florence City Building on US42 next to library (drop trees off before 10 am); Ryle High School behind stadium in Union (drop trees off before NOON); and Walton Park near the back end of park (drop trees off before 2 pm). Bring a bag and take some mulch home with you!



Bye-Bye Becky



Becky Haltermon

Our little bird has flown... Becky Haltermon, our Litter Abatement & Education Coordinator has left employment with our Division to new beginnings. Becky’s personal touch to our programming and her inquisitive nature expanded our mission in a positive and fun way. While we miss her desperately, we wish her well in her new adventures.

Boone County Solid Waste Management

Mary Frances Dickey, Solid Waste Coordinator
Kelly Chapman, Solid Waste Enforcement Officer

Phone: 859-334-3151

Email: mdickey@boonecountyky.org

Union Town Center Update

Last fall, Pizzuti Solutions of Columbus, Ohio presented a report to the Union City Commission, which identified strategies to develop the first phase of the Union Town Center. Since then, the Union Visioning Committee has begun follow-up work based upon Pizzuti's recommendations. Material has been prepared and distributed to market

the 90-acre Town Center Area. This material includes a summary of the market analysis and site development information. City officials have begun the process of contacting developers from various states and have initiated tours of the area in the last several months. This work will continue during the early part of 2010. In addition, the City of Union is

investigating financing schemes and incentives to attract developers to the Town Center area during the slow economy. Other efforts include monitoring and lobbying State officials to fund and complete the Mt. Zion Road widening project as well as forming an Economic Development Committee to advise the Union City Commission.

To view the Pizzuti Solutions report, visit the City of Union's website at www.cityofunionky.org. Questions about the project can be directed to Kevin P. Costello, AICP, Executive Director of the Boone County Planning Commission at 859/334-2196 or at kcostello@boonecountyky.org. Watch for future project updates in 2010.

Winter Snow Removal

During a Snow Emergency please be sure your cars are off the street to make clearing of the streets easier for the plows. For all

inquires please email the City's Commissioner of Public Works – Bob Kelly at commissionerkelly@insightbb.com.

Union's Volunteer Committee

Thank goodness for our volunteers! Our group is small but mighty. It is amazing what a handful of people can do. The committee members are Jim Longano, John and Belinda Peltz, Laura Gorman, Sarah Rodgers, Barbara Coughlin and Karen Franxman, Union Events Coordinator.

This committee is an advisory committee that plans different events for the citizens of Union and submits these events to the city commission for approval. Once approved the detailing begins and everyone helps when they can.

Our volunteers are very important to the success of our events. If you love to volunteer your time and talents, please attend a meeting to see how you can get involved. We meet every month at the city building. Meeting dates are on the city's website, www.cityofunionky.org or email Karen Franxman at unioncityevents@insightbb.com.

What Our Members Have to Say

"I joined the Union Volunteer Committee because my husband and I moved to Union two years ago and plan to make Union our permanent hometown. When I heard of the opportunity to become a Volunteer Committee Member for the city, I thought, 'what better way to get to know my neighbors, and how great it would be to help shape and be a part of the events and activities that bring our community together!'"

- Laura Gorman

"I joined to become more involved with the community and to promote how important volunteering is to the success of our community and insuring our voices are heard."

- John Peltz



Volunteer Committee members John Peltz and Laura Gorman

PROPOSED EVENTS

- JANUARY** – Family Tubing at Perfect North
- FEBRUARY** – Family Skating (Ice or Roller Skating)
- MARCH** – Easter Egg Hunt and Pancake Breakfast
- APRIL** – Safety Fair (partnered with Fire Dept)
- MAY** – Union Idol
- JUNE** – Movie Night & Beach Blast
- JULY** – 4th Celebration w/ Music & Ice Cream Social
- AUGUST** – Longest Yard Sale (5th, 6th, 7th) at Union Community Bldg. – Movie and Music Nights
- SEPTEMBER** – Union Parade
- OCTOBER** – Chili Cook out
- NOVEMBER** – Family Game Night
- DECEMBER** – Tree Lighting Open House

Check our website for details of all Union events.

Union Cares

Don't forget the "Union Cares Program." Bring your donations to the city building each month to be donated to a selected "non-profit" organization — check the city's website for the monthly list of organizations and their wish list. If you have a donation and can't get it to the city building, contact the city

events coordinator or the city clerk and we will pick it up at your home. If you do not use your manufacturer coupons, please drop them off at the city building (inside or in the drop box outside). If every household would donate just one can of food per month the city would collect 1,700 cans of food.

City of Union, Kentucky

1843 Mt. Zion Rd • P.O. Box 53 • Union, KY 41091
859/384-1511
cityclerk@insightbb.com • unionmayor@insightbb.com
unioncityevents@insightbb.com

CEO's Corner — John C. Mok, CVG CEO



John C. Mok

With over 25 years in the airport business, I have had the opportunity to travel to and from numerous airports. It is from my professional

and personal experiences at these different airports that I learned how important it is for an airport to understand the needs of the traveling public and take responsibility for customer service. In these days of increased security regulations, an airport can make positive changes to enhance customer service and offer new amenities that will improve each passenger's experience. CVG has repeatedly been ranked number one for customer service by its passengers and I am committed to continue efforts that ensure we stay at the top into the future. To help you take advantage of the different amenities at CVG and make your next flight from our airport even better, we have

created a top seven CVG passenger tip list.

Your comments and feedback are greatly appreciated (info@cvgairport.com).

Top Seven Tips for Local Passengers Flying out of CVG

- Visit www.cvgairport.com to find low air fares and parking discounts at CVG.
- Join CVG's Parking Advantage program and earn free parking.
- Look for travel updates on CVG's website or receive automatic updates by following us on Twitter (<http://twitter.com/CVGAirport>).
- Arrive early, relax and eat and shop at our over 60 restaurants and retail locations. There is something for everyone.
- Need help? Ask one of our local volunteer Airport Ambassadors.
- Catch up with email from friends by enjoying free Wi-Fi in many areas of our Airport.
- And most of all, let us know how we are doing. Did you enjoy going through our new security screening facility? Fill out a yellow comment card found throughout the terminals or visit us on-line and help us improve your travel experience at CVG. It is our top priority.

Boone County Public Schools

Parent Engagement Opportunities

STEM Career Awareness

Science, Technology, Engineering and Mathematics awareness evenings for parents and students grades 6-10. Program presents an exciting view of STEM careers, reasons we need more students advancing into these careers and what it takes to have a STEM career. Information and hands-on activities. For parents and students.

February 4, 6-8 pm and Feb. 25, 6-8 pm. Boone County Staff Development Center, 99 Center St., Florence. No Registration required.

Parent Leadership Development

Get involved in understanding how schools work, how parents can impact their children's education and future career, and how parents can make a difference in our school community. Learn how to lead committee meetings and how to make a presentation. Visit Gateway Community College and NKU. Attend a School Board Meeting. Series of 9 sessions. Child care provided. **Held at Boone County Staff Development Center, 99 Center St., Florence.**

6:30-8 pm, Jan. 26, Feb. 9, Feb. 16, Feb. 23, March 4, March 18, March 25, April 1 and Graduation April 8. Participants are encouraged to attend as many sessions as possible.

Two Million Minutes This 54-minute film is a can't-miss documentary for all parents and community members. Global competition is here and it will affect our children's future. View this film and subsequent discussion to analyze your own perspective on US education and the dedication it takes for a successfully competitive future. **Monday, Jan. 11, 6-8 pm, Ockerman Middle School; Monday, Feb. 1, 6-8 pm, Camp Ernst Middle School; March 15, 6-8 pm, Gray Middle School; No Registration required.**

Passport for Success This three-session program is designed to help parents work with their students on how to manage time, listen and concentrate; manage homework and study textbooks; prepare for and take tests; take notes and organize information; improve their memory and

thinking skills; and improve reading skills. The program assists parents in making a strong connection between home and school. Parents are encouraged to attend all three sessions. Get your Passport for Success on **Mondays- Feb. 22, March 1, March 8, 6-8 pm, Ockerman Middle School.**

English Language Instruction for Parents and Preschool Children

English as a Second Language for Parents and Children 1 to 6 yrs. Learning together through the use of Leap Frog programs. Families will have a loan of a Leap Frog program for use at home for 4 months. Parents must attend two training sessions. **Held at Ockerman Elementary starting Wednesday Jan. 13, 6-7 pm.**

English Language Instruction for Parents

Come join us to learn introductory English. Childcare will be provided. **Sessions to be held each Wednesday at Ockerman Elementary School from 6-7 pm. Starting January 13. Contact Melissa Raper at 282-4620 to register.**

Parent Ready for School Three 2-hour programs to help parents successfully navigate their child's education. These sessions will increase parents' skills, knowledge and confidence in their connection with schools, increase parents' ability to support their children in transition to K and beyond and equip parents to take advantage of opportunities for the children. For preschool parents in transition to Kindergarten. **Held at Boone County Staff Development Center, 99 Center Street, Florence. 6-8 pm, March 16, 23, 30.**

For More Information:

Unless otherwise indicated, for more information or to register, contact: Dr. Anna Marie Tracy
phone: 334-3792
Annmarie.tracy@boone.kyschools.us

Setting SMART New Year's Resolutions

New Year's Resolutions are surfacing and many are starting to get serious about toning up and losing weight. Every year New Year's Day brings hope of starting fresh, accomplishing tasks that were not manageable the year before, or just a new opportunity to work on self-improvement. It's always so exciting in the beginning, but where does the motivation go? Why do so many New Year's Resolutions fail? Goal setting is simple, "I just write down what I want to accomplish ... right?" Easy mistakes to make while setting New Year's Resolutions:

- Goals are too broad
- Unrealistic expectations
- Improper timelines
- Too many goals at one time

It might seem silly, but there are actually guidelines to goal setting called SMART Goals. SMART stands for: **S**pecific, **M**easurable, **A**ttainable, **R**ealistic, and **T**imely. Once you learn how to set SMART goals you will be working efficiently and effectively all year long!

Specific & Measurable

Goals need to be specific and measurable. If you set a goal of walking more in the New Year, how



can you measure what "more" means? Would it count if you went to the mall and pushed the stroller around? Does "more" mean join an aerobics class and walk on the treadmill daily? It's important to be specific and measurable because checking off accomplishments might be your best tool to stay motivated!

Good Goal: I will walk a minimum of three times a week for 30-45 minutes.

Bad Goal: I will start walking more.

Attainable & Realistic

Make your goals "attainable" and "realistic." If you haven't seen the inside of a gym in the last year, setting a goal of five gym workouts a week is a bit ridiculous. Try starting slow and working your way up to larger goals. It would be better to have easy goals that you are ac-

complishing, rather than huge goals that are never met. Set yourself up for success; if you constantly feel like you are failing you will be more likely to give up on your New Year's Resolutions.

Good Goal: I will aim for a minimum of 10,000 steps per day, 5 days a week (I love walking; I do not know why I do not do it more often).

Bad Goal: I am going to work out at the gym for an hour every day (I hate gyms, but maybe if I could keep a routine for a couple months it will become a habit).

Timely

Every goal should have a timeframe allowing you to reward yourself as you continue to accomplish specific and attainable goals. It is always a good idea to set some short-term and long-term goals. The short-term goals can be simple and

provide instant gratification, while long-term goals can be complicated and it may take months or years to accomplish.

Short-term goal: I am going to start walking/jogging 30 minutes a day, 5 times a week so that I can participate in a 5k race with my friends next month.

Long-term goal: I am going to follow a triathlon training schedule (starting Monday) so that I can complete a triathlon six months from now.

Develop three SMART goals a week and find a friend, professional, or family member to help hold you accountable. Good luck and enjoy your accomplishments!

These tips are provided by the St. Elizabeth Weight Management Center in Florence. For more information about surgical weight loss, please call 859/212-GOAL (4625). You may also call to register for a FREE informational seminar offered the first Thursday of every month. Surgeons, Dr. Carey Brown and Dr. Ryan Moon, are the Medical Directors of the Weight Management Center and are available to patients as well as Dr. Dwayne Smith.

St. Elizabeth Healthcare



St. Elizabeth Covington
1500 James Simpson, Jr. Way
Covington, KY 41011
859/655-8800

St. Elizabeth Edgewood
1 Medical Village Dr.
Edgewood, KY 41017
859/301-2000

St. Elizabeth Falmouth
512 South Maple Ave.
Falmouth, KY 41040
859/572-3500

St. Elizabeth Florence
7380 Turfway Rd.
Florence, KY 41042
859/212-5200

St. Elizabeth Ft. Thomas
85 North Grand Ave.
Ft. Thomas, KY 41075
859/572-3100

St. Elizabeth Grant
238 Barnes Rd.
Williamstown, KY 41097
859/824-8240

Wellness Center Programs for the Whole Family

Do you have a case of the “winter blahs” or post-holiday blues?

As we enter a new year, now is the time to get off the couch and get into shape for all of your spring and summer activities. Whether you are a serious athlete looking to improve your game, or someone looking to get into better shape, we have the right fitness program for the entire family. We feature the following:

Personalized Training for Mom and Dad - This exercise program features one-on-one attention from a certified personal trainer to help you reach your fitness goals.

Boot Camp for Everyone - This twice-a-week class is sure to whip you into better shape. Our group classes include Pilates, yoga, kickboxing, strength training, and much more.

Sports Performance Training for Athletes - We provide high school, college, and recreational athletes with a quality program to improve overall athletic performance and decrease injuries. Our program improves speed, quickness, agility, and strength for athletes of all ages and abilities.

For more information, call us at 859/371-8447. We're located at 7981 Freedom Way behind Champion Field.

Show this *What's Happening!* when signing up for any of our exercise packages and receive a **FREE 20-minute nutrition consultation** with our registered dietician.

A Closer Look at Hospice & How It Can Help Your Loved One

So many times, we have heard friends say, “the family has called hospice” when referring to the serious illness of a loved one. But have you wondered, “What specific kind of care does hospice provide?”

First of all, hospice is a philosophy of care. Hospice is not necessarily a *place*, but rather a *program* that provides care and support to individuals as they journey toward death. With the belief that caring and closeness are equally important at every stage of life, the goal of St. Elizabeth Hospice is to provide patients and their families with the highest possible level of physical, emotional and spiritual care during this final journey. Hospice is provided to individuals in the last phase of incurable illnesses such as cancer, heart, lung, liver or kidney disease, stroke, dementia or neuro-muscular disorders.

Special Services that Hospice Provides

- Hospice treats the person, not the disease; and emphasizes quality, rather than length of life, by managing pain and other troubling symptoms.



St. Elizabeth's 16-bed inpatient hospice center is located in Edgewood.

- Palliative or hospice care focuses on comfort rather than a cure.
- Hospice care is provided in the home, a nursing home or for short periods of time at our inpatient unit in Edgewood.
- Teaching, assistance and support to caregivers.
- Assistance with dietary and nutrition counseling if necessary.
- Services and care are provided by an interdisciplinary team consisting of the patient's physician, the hospice medical director, registered nurse, social worker, chaplain, home health aide and specially trained volunteers.
- Bereavement support is provided to the family following the patient's death for a 13-month period. These include grief support groups

for adults and our STARS Program for children. Individual and family grief counseling is available as needed.

Criteria for Admission into the St. Elizabeth Hospice Program

St. Elizabeth has a specialized 16-bed inpatient hospice center in Edgewood. The unit provides a home-like setting where care is focused on comfort. Family members are welcome to visit 24 hours a day. Pet visits are also permitted. However, hospice care is provided most often in the home or assisted-living communities and nursing homes. Whether in the home or at our center, the St. Elizabeth Hospice staff serves as a resource for the needs

of your family. These criteria are evaluated by your physician as your loved one is considered for hospice care:

- Incurable disease with a life expectancy of six months or less
- Desire for palliative (comfort) care; no longer receiving curative treatment
- Have a physician willing to direct the hospice plan of care
- Reside in Boone, Campbell, Carroll, Gallatin, Grant, Kenton and Owen counties (this applies to home care only)
- Hospice services are available to all qualified individuals, regardless of race, religion, nationality, age, gender, or disability.

Arranging for Hospice Care

Medicare, Medicaid and most private insurance companies cover the cost of hospice care. Services are also available on a private pay basis. Care is provided regardless of ability to pay. A physician referral is required to begin hospice care. However, anyone may inquire about St. Elizabeth Hospice by calling 859/301-4600.

BC Community Ed., pgs. 11-12, 17-18
BC Cooperative Extension, pg. 21
BC Fiscal Court, pgs. 9-10, 19-20
BC Planning Commission, pg. 6
BC Public Library, pg. 13-16
BC Schools, pgs. 1, 25
BC Solid Waste Mgt., pg. 23
BC Success by 6, pg. 28
Brighton Center, pg. 8
Cinti./NKY Int'l. Airport, pg. 25
City of Florence, pgs. 3-6
City of Union, pg. 24
NK Health Department, pg. 2
St. Elizabeth Healthcare, pgs. 26-27
SD1, pg. 7
TANK, pg. 22

TIME DATED

©2010 All rights reserved. Reproduction in whole or in part without permission is prohibited. WHAT'S HAPPENING!™ is published by Rivertown Communications LLC, Covington, KY 41015; 859/359-5334; www.whatshappeningnews.com. Although all information is believed to be reliable, Rivertown Communications cannot guarantee the accuracy of information presented in this publication. All articles are submitted and approved by participating organizations and do not necessarily represent the views or opinions of the publisher.

Visit www.whatshappeningnews.com for all the news in Boone, Kenton, Campbell, Oldham and Madison counties

Boone County Success By 6®

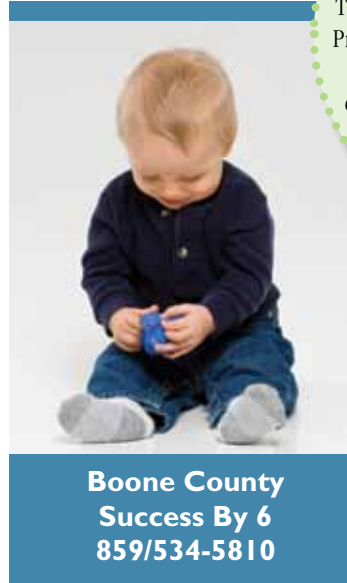
Children Learn Through Play!

From the very beginning of a child's life he is excited and determined to understand how the world around him works. In those very important early years, the way children learn is by playing. When you look at a child playing and think he is simply having fun, there is far more happening than meets the eye. Play is a vital aspect in early childhood development. Play is the building block of a child's intellectual skills. It is important for parents and caregivers to realize that through play, children develop social skills, problem-solving skills and also interpersonal and language skills. When a child engages in hands-on play activities at home or in preschool, it helps to refine his listening and reasoning skills. Simply put, a child's work is to play and it is quite possibly the most important job they will ever have. Play is so important to optimal child development that it has been recognized by the United Nations High Commission for Human Rights as a right of every child. Through carefree, healthy play, children begin a love of learning which will help them be prepared for both school and life.

What Is Play?

For young children, there is no distinction between play and learning; they are one and the same. Yet not all play is the same. Most experts agree that children's play can be divided into these categories:

- **Active play:** running, jumping, climbing, riding, and other use of large muscles.
- **Quiet play:** reading, stringing, coloring, etc.
- **Cooperative or social play:** games and activities that involve more than one.
- **Solitary play:** drawing, dreaming, or any activity that involves only one.
- **Manipulative play:** putting together puzzles, building with blocks, cutting and pasting, or any activity that involves eye-hand coordination or fine motor skills.
- **Creative play:** painting, molding, solving problems, making music, telling stories, or any activity that involves a child's imagination.
- **Dramatic play:** dress-up, make-believe, or any play that involves pretending.



The categories overlap and any activity will likely fall into more than one. For example, playing "Tag" is active and cooperative at the same time. Though children could care less which category their play falls into, it is valuable for parents, teachers, and adults who work with young children to understand the types in order to provide opportunities for children to engage in them all.

Do Children Still Play?

As a child you probably remember being told to go outside and play and

Need help with health insurance coverage for your child?

The Kentucky Children's Health Insurance Program (KCHIP) is free or low cost health insurance for children. KCHIP is for children under the age of 19 who do not have health insurance. Call United Way 2-1-1 for more information.

not to come home until the street lights came on. Nowadays because of over-scheduling, emphasis on academics in preschool, too much screen time on computers, television and video games and paranoia that the media has created around our children's safety, play the way we remember it is at risk. Early care environments are heavily focused on academics through practices that are not developmentally appropriate for young children.

In a child's early years, various types of play should be a fundamental part of every day of their life. Remember, it is not about flash cards and fancy, expensive toys. Resist the thought that downtime is not a good thing for children and signing them up for the latest class, sport, or activity is what will help them the most. Make play a central part of your child's and your own life.